



Operation guide

NYK SYSTEMS

Installation Instructions

1. Log on to Windows with in an account with the administrator rights.
2. Please close them if there are other running applications.
3. When a **RebroViewer** installation media is put into the optical drive on a PC, the installer for 32-bit or 64-bit starts automatically according to the PC. Note: If the installer does not start, browse through the installation media with My Computer or Explorer and execute "RebroViewerInstaller.exe".
4. The necessary software (Microsoft .NET Framework 4.5, Microsoft Visual C++ 2015-2019 Redistributable Package) will be installed to start **RebroViewer**.
Note: In the user account control dialog, please select "allow to make changes".
5. Confirm the license agreement that appears and if you agree, select "I accept the terms in the license agreement" to left-click [Next].
Follow the on-screen instructions for installation.
6. When you start **RebroViewer** after completion of installation, the latest version will be checked on the Internet. If the latest version exists, a web updater will start.
Note: Select "allow to make changes" in the user account control dialog. Also, please allow communications for "RebroViewerUp.exe" if your security software interrupts Internet connections.

Uninstallation Instructions

Start [Start Menu]-[Control Panel]-[Program]-[Programs and Features].
Select [**RebroViewer**] and left-click [Uninstall].

Note: The setting file for each user remains on the computer so that it can be used even if RebroViewer is reinstalled. Delete the folders below when deleting the setting.

C: %User%(Login user name)%AppData%Local%NYK Systems%RebroViewer LocalData

System requirements

OS: Microsoft Windows10, Windows8.1, Windows7 SP1, (64bit/32bit compatible)
Graphics boards: Graphics boards or on-board chips with which DirectX9 works comfortably
Display resolution: 1280×1024 (800) dots per inch or more
Internet connection environments: Required (for the web update)

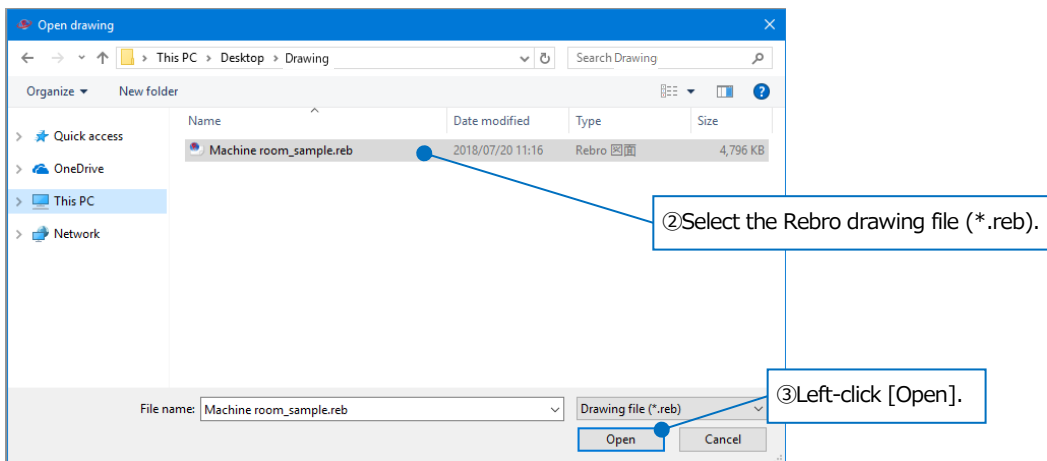
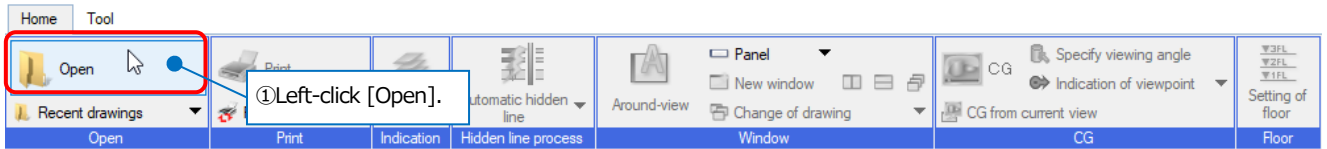
-**RebroViewer** is a free redistributable viewer.

-Always use the latest version of **RebroViewer**. If you use an older "Viewer" version than the "Rebro" on which the drawing was created, the "Viewer" may not correctly show the newly added functions to "Rebro".

-No individual support for **RebroViewer** is available.

1. Open a drawing

Open a Rebro drawing file.



2. Set up the displays

How to enlarge, reduce, or move screens

-Enlarge or reduce

You can enlarge or reduce a screen by rotating a wheel around the mouse position.

-Enlarge a specified area

Right-drag the area where you want to enlarge.

Note: Press End key to revert to the previous display area.

-Move a screen

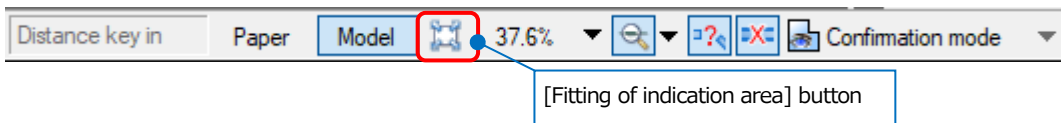
Press ↑ ↓ ← → keys.

Drag a wheel to move a screen.

Also, drag scroll bars that are placed on the right or bottom on a screen to move a screen.

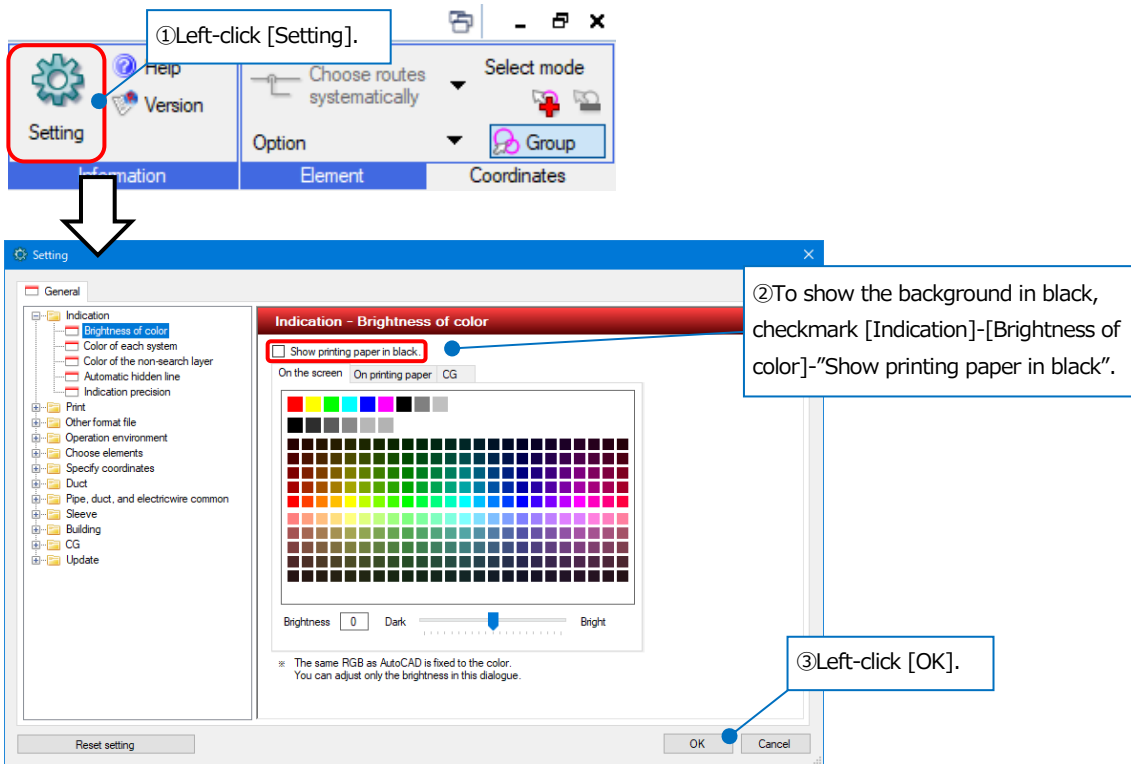
-Show entirely

Left-click [Fitting of indication area] button on the status bar, or press Home key.



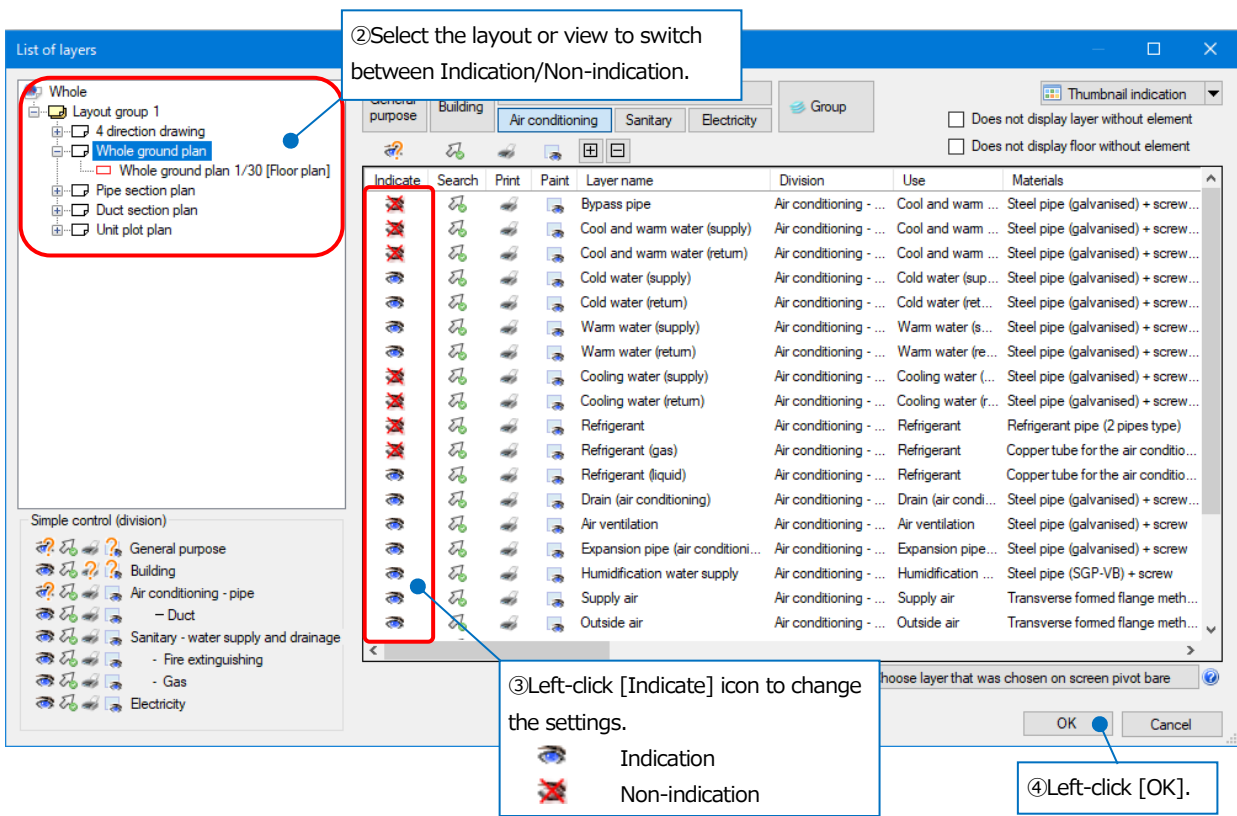
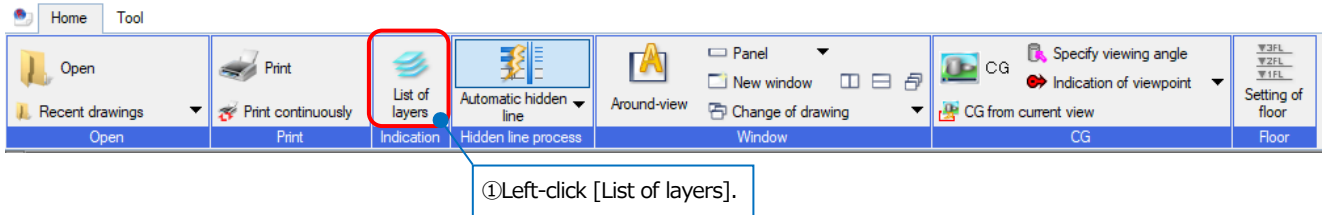
How to change a background color

You can select a background color either white or black.

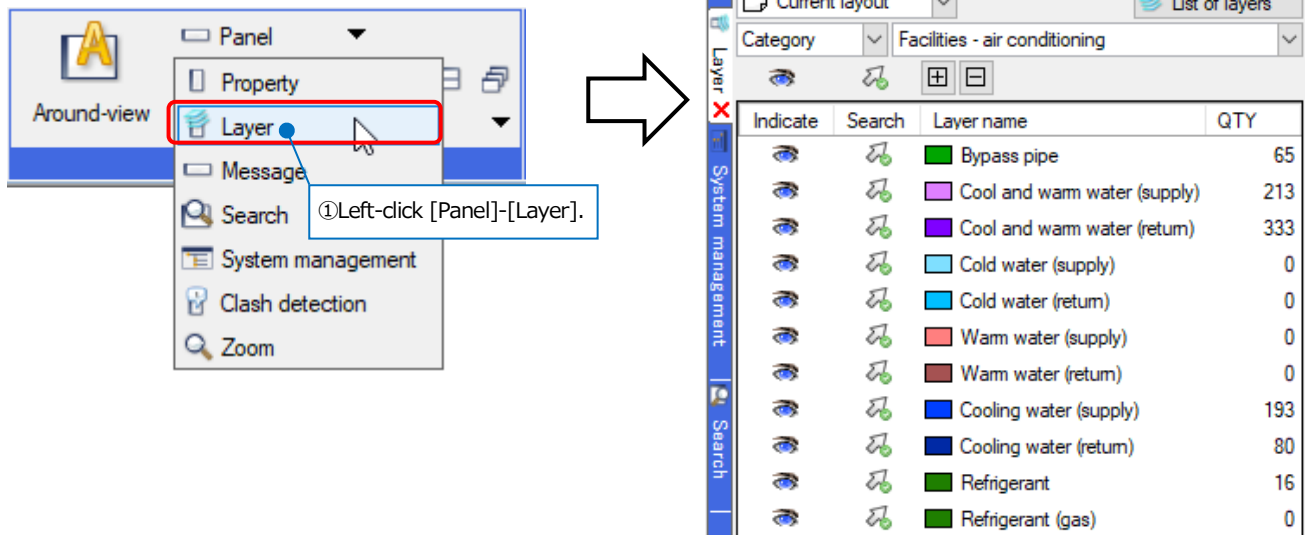


How to switch between layer displays

You can switch between Indication/Non-indication for each layer.

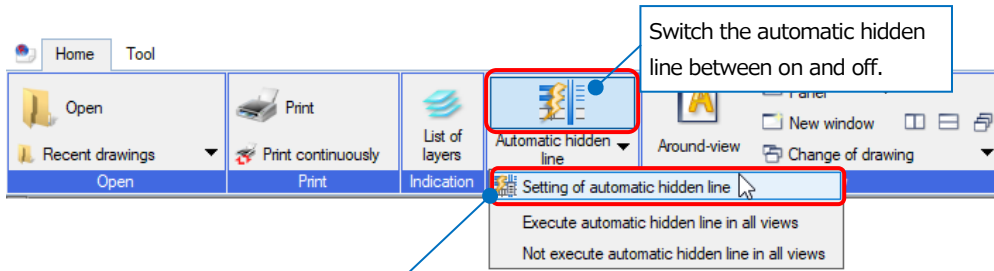


Also, you can operate it on the panel.

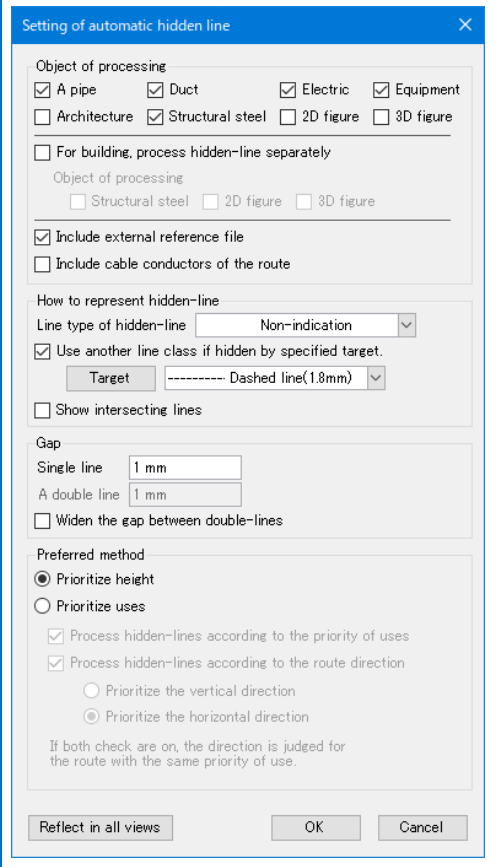


How to set up an automatic hidden line

If an automatic hidden line is set for the drawing that you want to open, the setting is reflected.

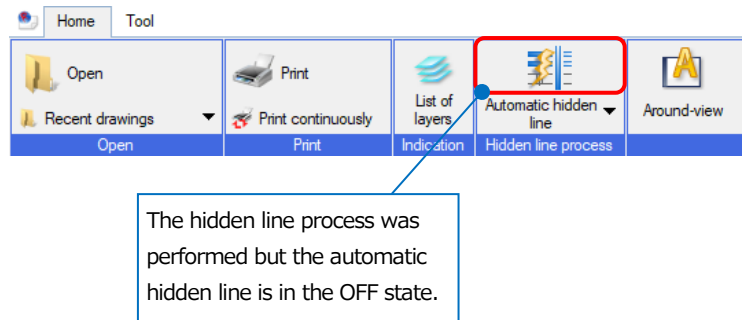


You can check or change the setting of automatic hidden line by [Automatic hidden line]- [Setting of automatic hidden line].



- Supplementary explanation

In the case that [Process hidden-line manually] is set for the drawing:

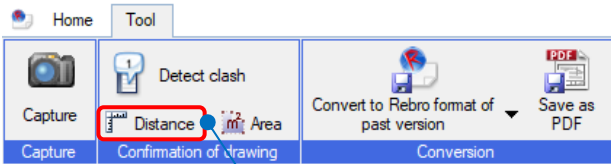


When you apply an automatic hidden line to the drawing for which hand operated hidden line was set, Rebro changes the setting details to automatic hidden line. If you want to recheck the state of hand operated hidden line, open the drawing again.

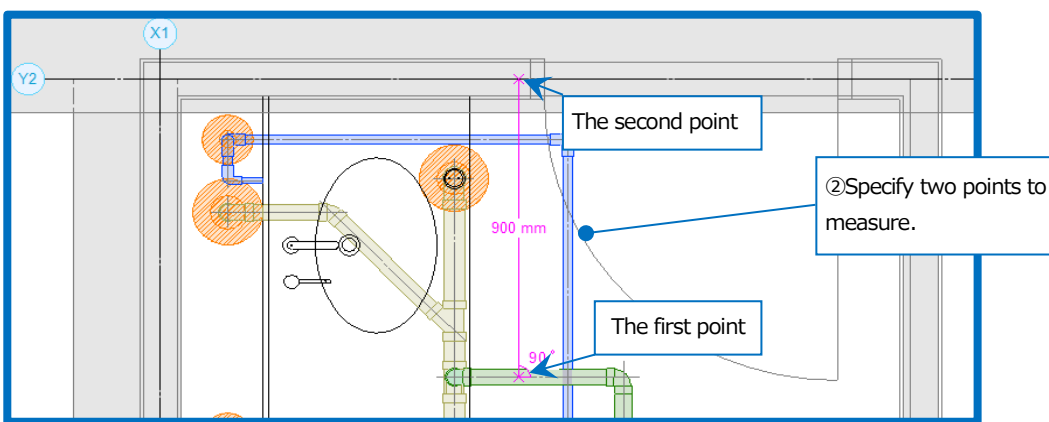
3. Check a drawing

How to measure a distance or an angle

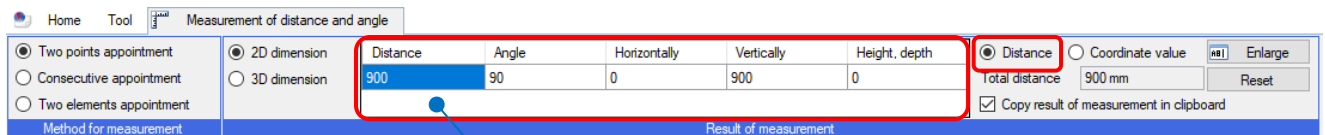
You can determine a distance and coordinate values between the two specified points.



①Left-click [Distance].

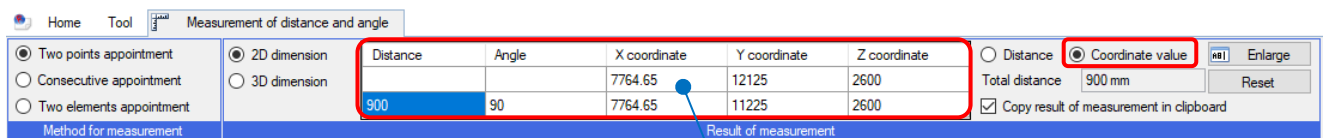


For [Distance]



The distance between two specified points appears in the result field.

For [Coordinate value]



The coordinate values and the distance between two specified points appear in the result field.

How to measure the area

Measure the area by specifying vertices.

①Left-click [Area].

②Specify all vertices to left-click [Decision].

③The measurement result appears on the ribbon.

How to check the floor height

You can check the floor height set in a drawing.

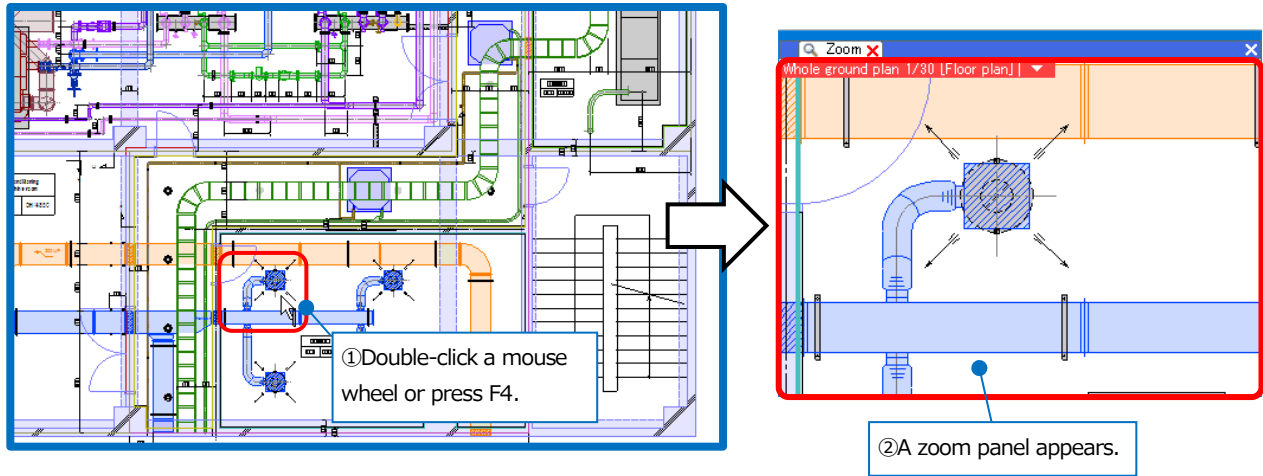
①Left-click [Setting of floor].

②The table of floor names and floor heights can be checked.

Floor name	Floor height	Z-coordinate value
RFL		19000
5FL	3800	15200
4FL	3800	11400
3FL	3800	7600
2FL	3800	3800
1FL	3800	0

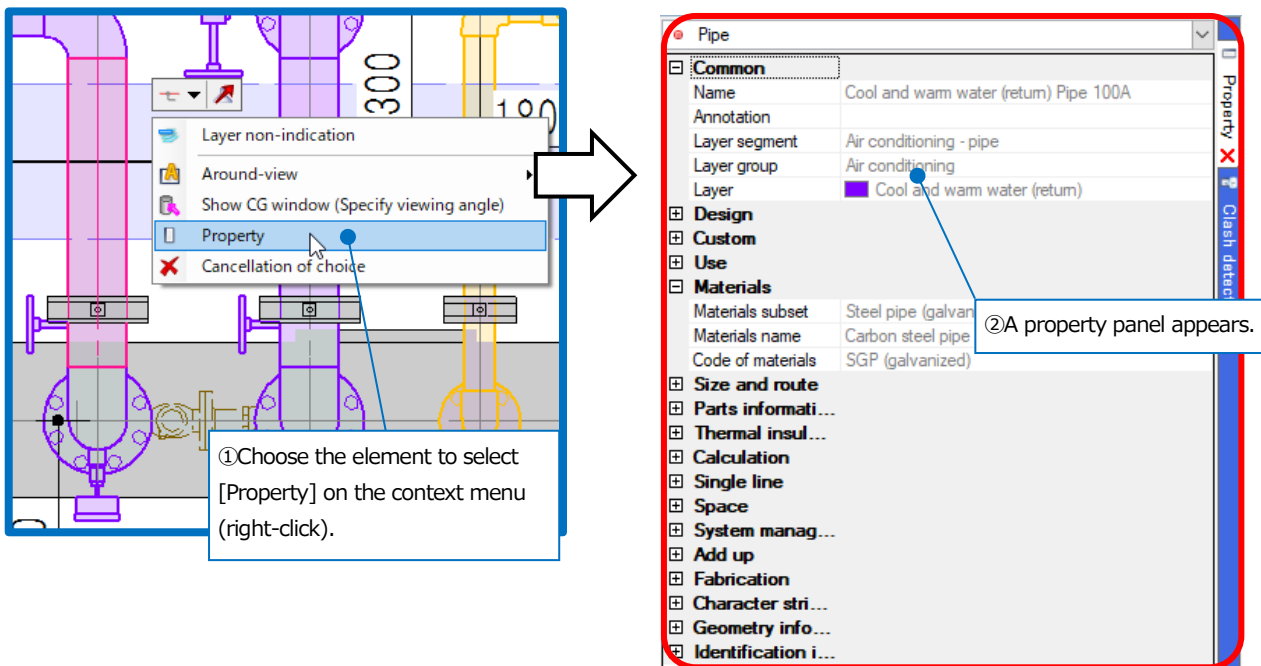
As for zoom panels

You can enlarge an area around a mouse pointer on a drawing.



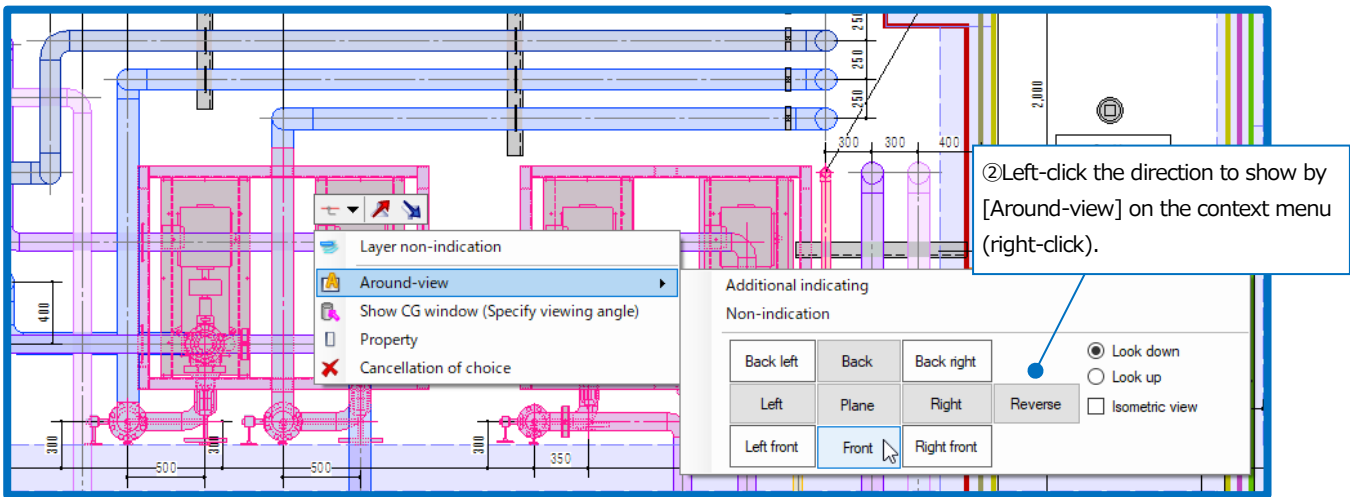
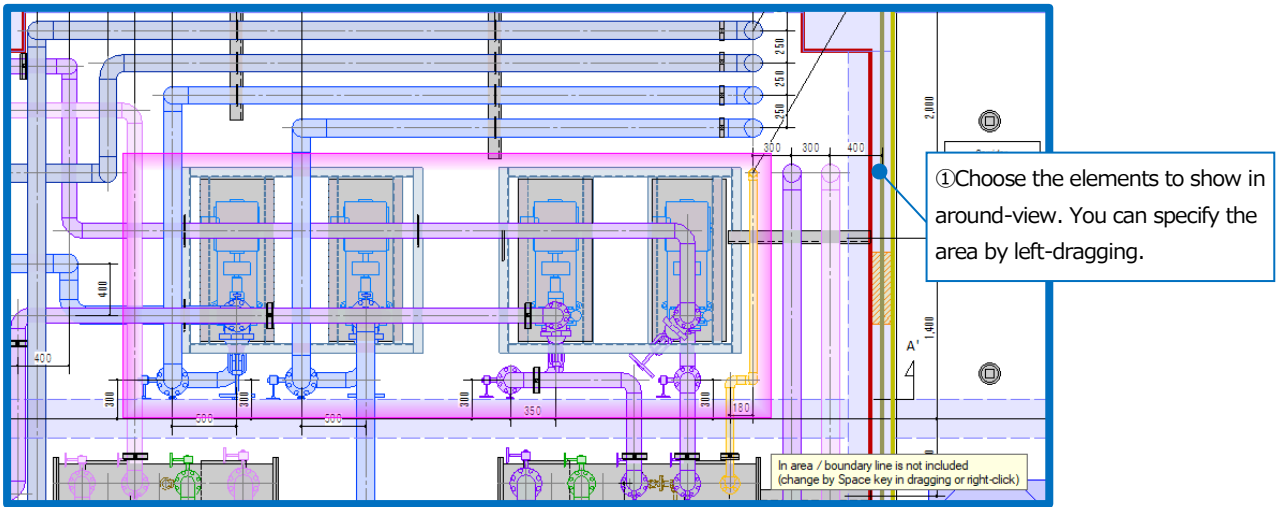
As for property panels

You can check attributes of an element.

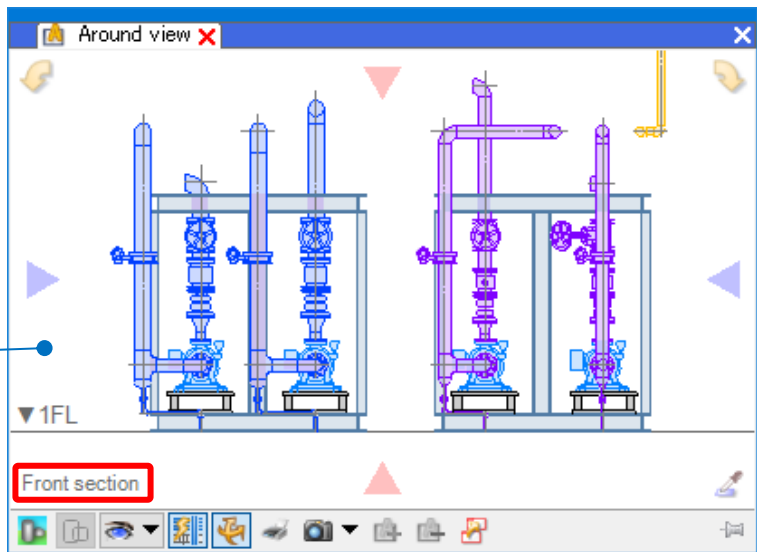


As for around-view

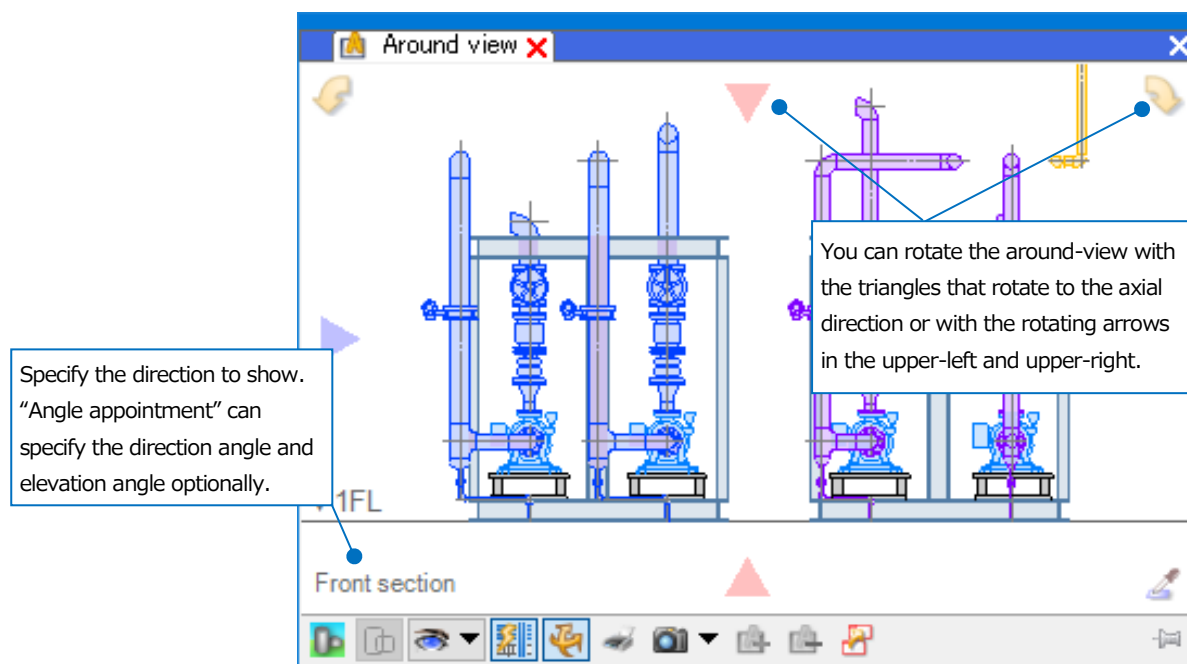
You can show the chosen elements from another direction.














③ An around-view in the specified direction appears.



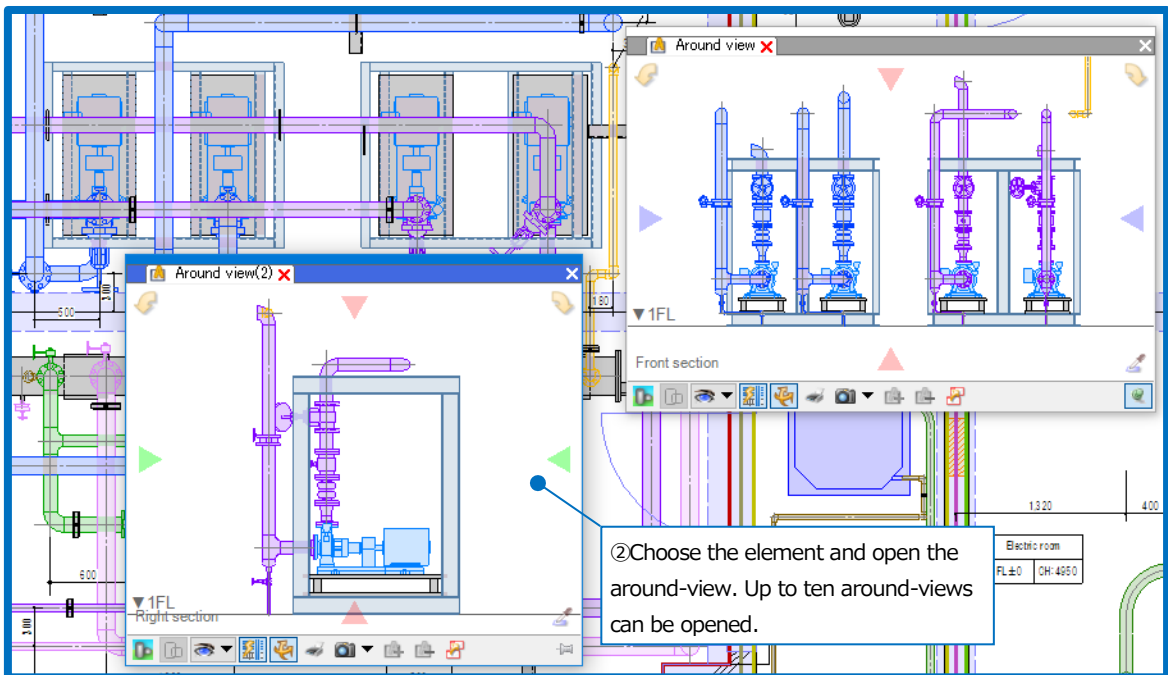
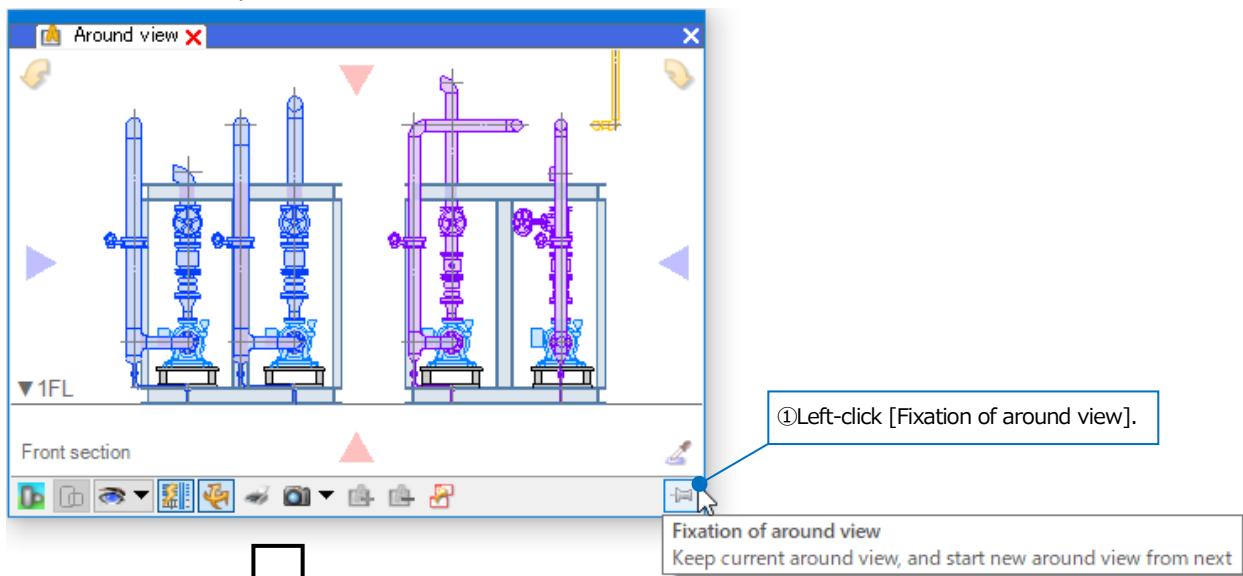
You can switch the viewpoints in around-view.



	<p>Left-click a pipette button and choose a line on the drawing to change the viewpoint according to the line angle.</p>
	<p>Switch around-view to CG display.</p>
	<p>Change transparency of CG display in around-view.</p>
	<p>Switch the expression of around-view.</p> <p>[Display or hide of element]: You can set up display or hide for each element type, and settings of CG transparency for around-view.</p> <p>[Display additionally]: You can switch display or hide for elements Only in a view or Across all floor plane-view.</p> <p>[Additional line]: You can switch display or hide for Indication of the grid, Grid line, or Floor line.</p> <p>[Single line/Double line]: You can switch between single-lines and double-lines in around-view.</p> <div data-bbox="347 1227 754 1753" style="border: 1px solid gray; padding: 5px;"> <p>Display or hide of element</p> <p>Display additionally</p> <p><input type="checkbox"/> Only in a view</p> <p><input type="checkbox"/> Across all floor plane-view</p> <p>Additional line</p> <p><input type="checkbox"/> Indication of the grid Setting</p> <p><input checked="" type="checkbox"/> Grid line</p> <p><input checked="" type="checkbox"/> Floor line</p> <p>Single line/Double line</p> <p><input type="radio"/> Double line indication</p> <p><input type="radio"/> Single line indication</p> <p><input checked="" type="radio"/> As original</p> </div>
	<p>Switch the automatic hidden line between on and off.</p>
	<p>In the ON state, right-drag a mouse to turn the around-view. Choosing an element allows you to turn the around-view around the chosen element.</p>
	<p>Print the around-view.</p>

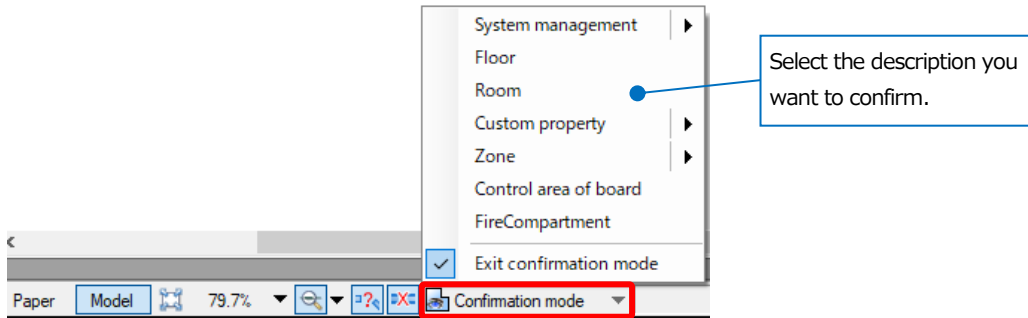
	<p>Save the image as an image file. [Save in file]: You can save the images into BMP, JPEG, GIF, TIFF, and PNG image format. [Save in clipboard]: You can paste the images onto Word or Excel. [Send by email]: You can send the saved images by e-mail. Left-click [Setting of email sending point] to enter an email address, subject, and main text. [Setting the resolution]: You can set the resolution for a captured image.</p>
	<p>Display additionally the selected element on the current around-view.</p>
	<p>Hide the selected element on the current around-view.</p>
	<p>Start an around-view in the same state of display.</p>

You can start multiple around-views.



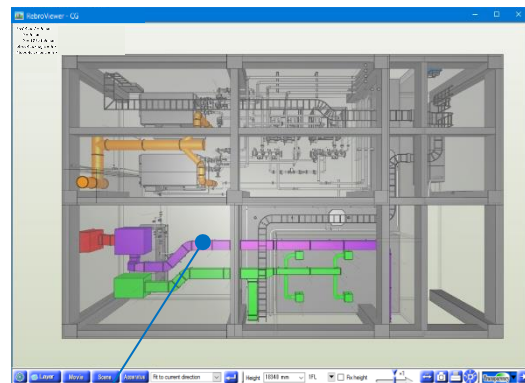
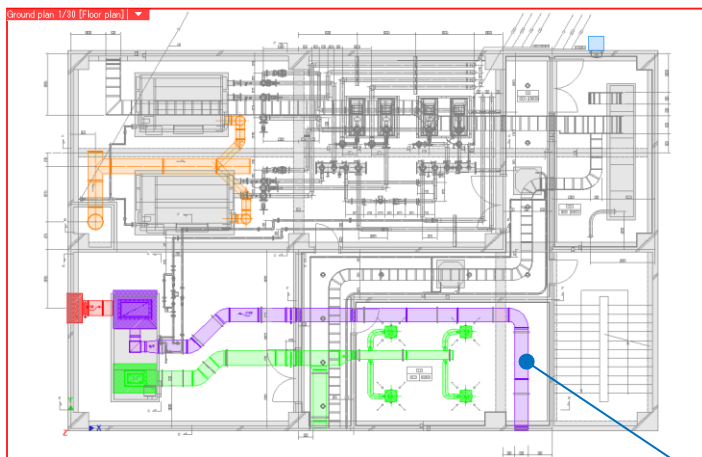
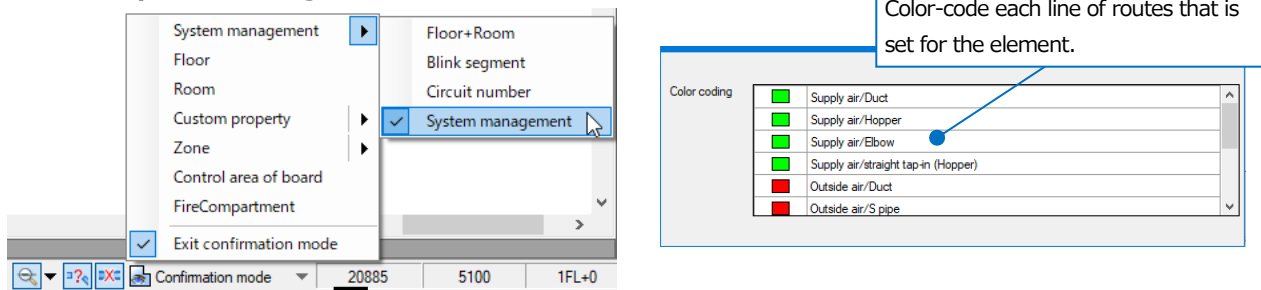
As for confirmation mode

In the case that Room, System management, Custom property, etc. are set, you can left-click [Confirmation mode] to color-code and show drawings or CGs.



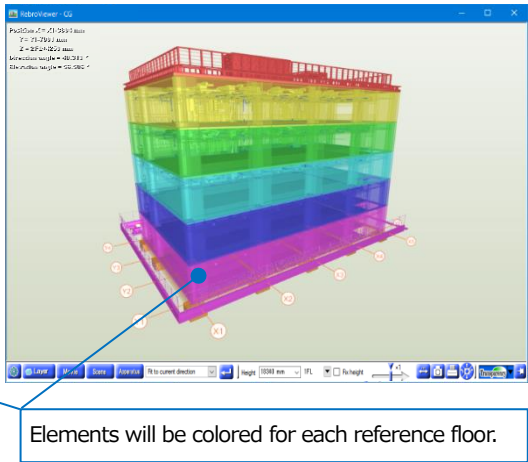
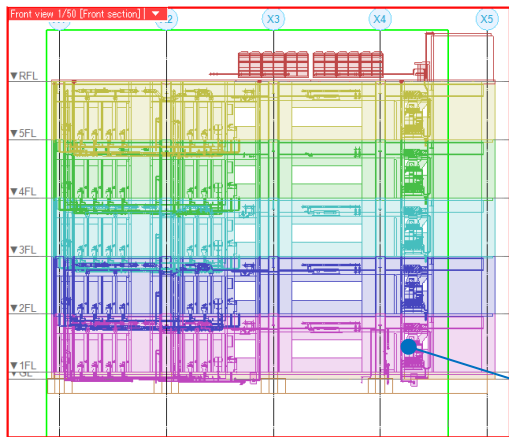
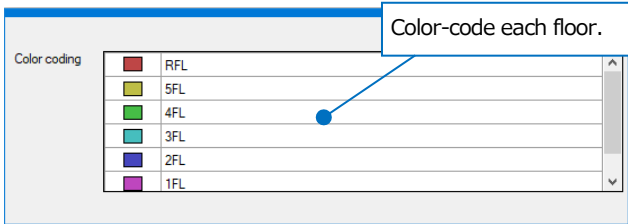
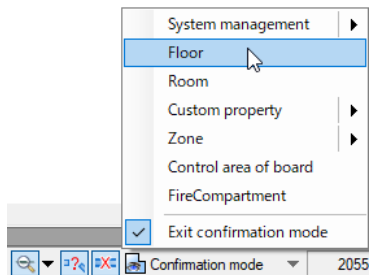
For Color-coding, Custom property, Zone type, etc., confirm at "▼" next to the "Confirmation mode" icon.

Confirm system management

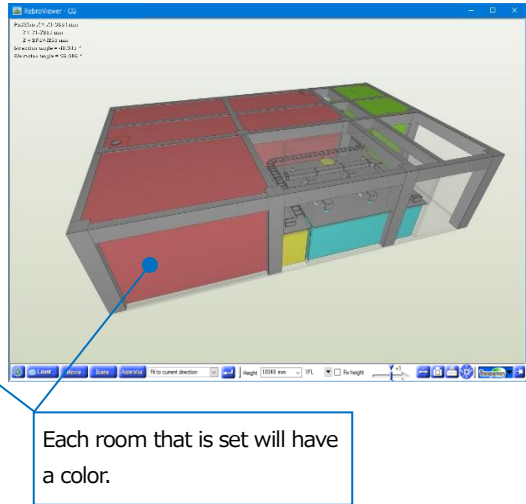
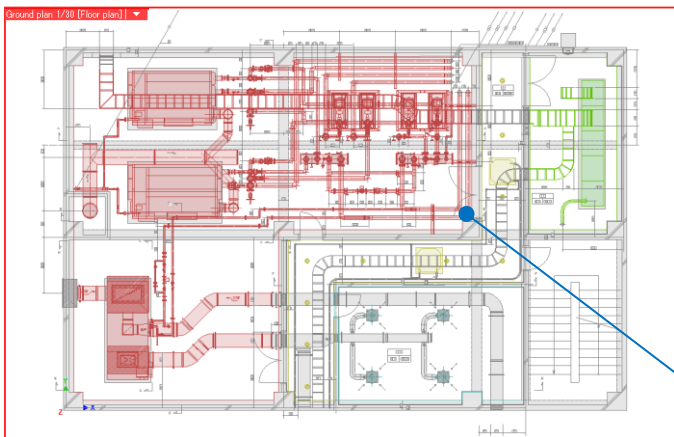
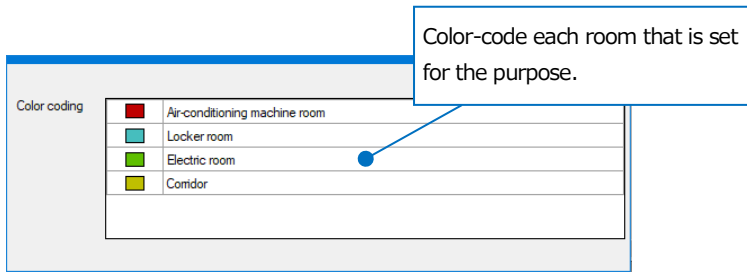
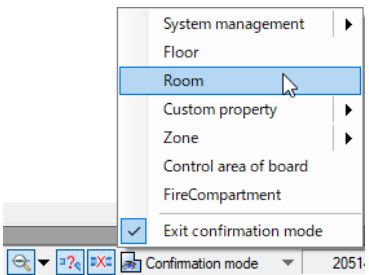


The line of routes that is set for the element will have a color.

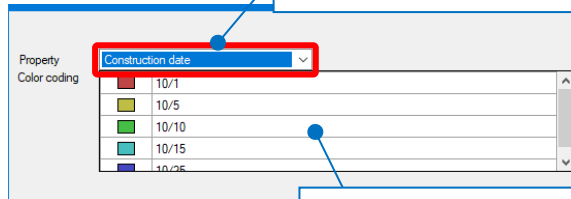
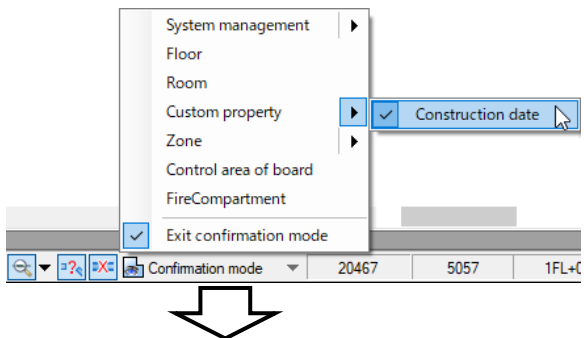
Confirm each floor



Confirm each room

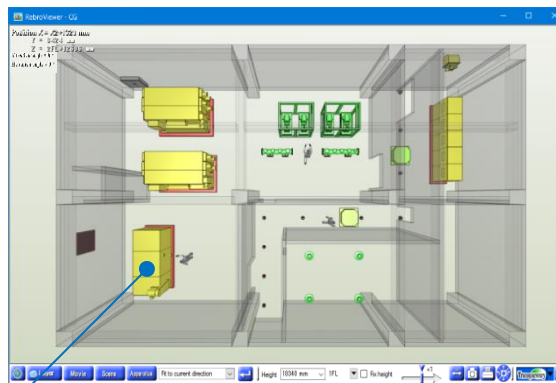
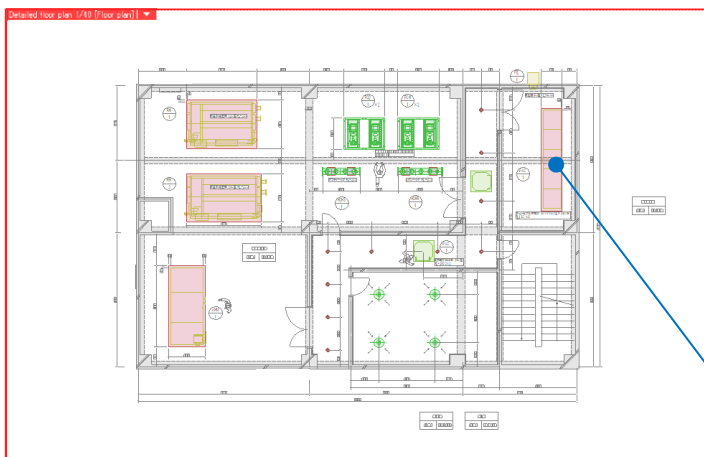


Confirm custom property



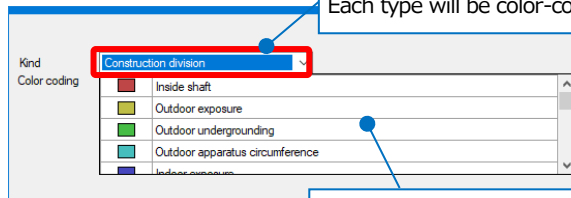
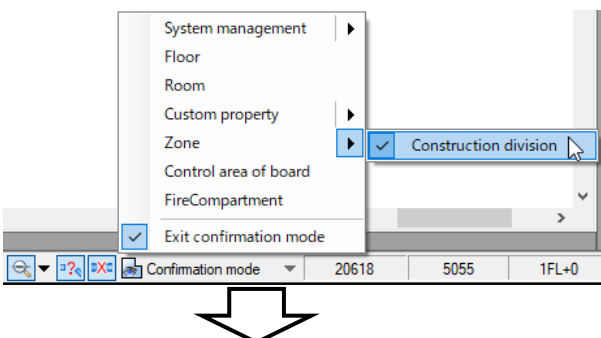
Select the property. The display is color-coded for each description of the property.

You can confirm a table of values and colors that are set for the property.



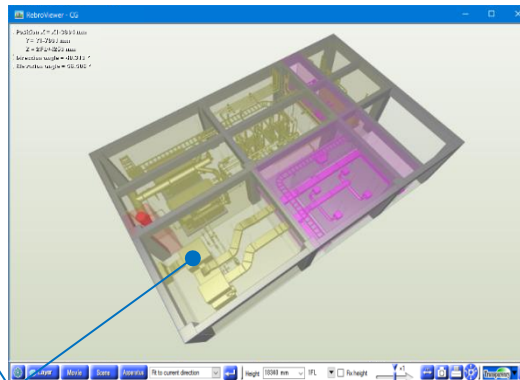
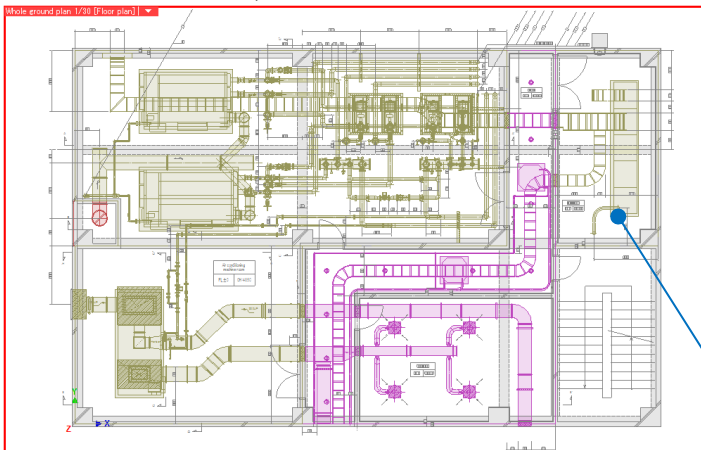
The element for which you set custom properties will be colored.

Confirm each zone



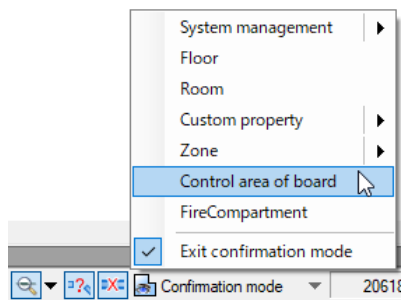
Select one in the types you set. Each type will be color-coded.

You can confirm a table of names and colors that are set for the zone.



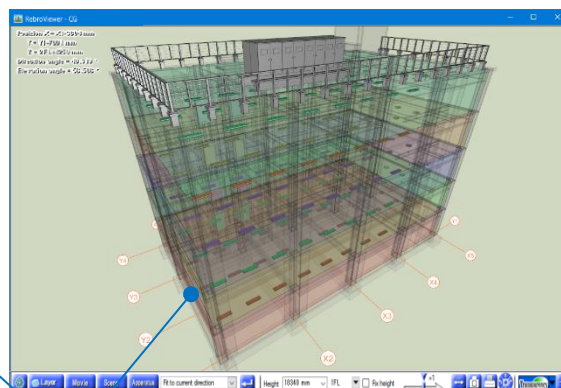
Elements will be colored in each zone.

Confirm control area of board



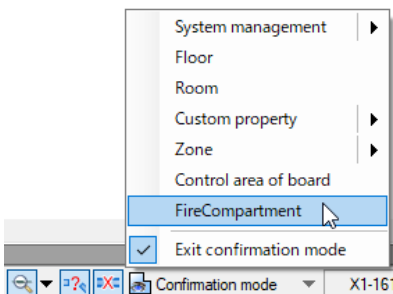
Color coding	
■	1L-1
■	2L-1
■	3L-1
■	4L-1
■	5L-1

Color-code each board name.



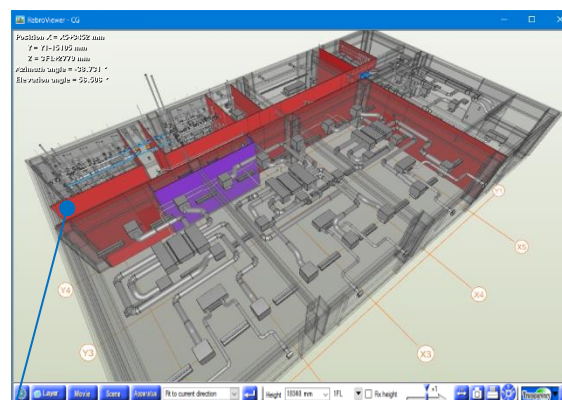
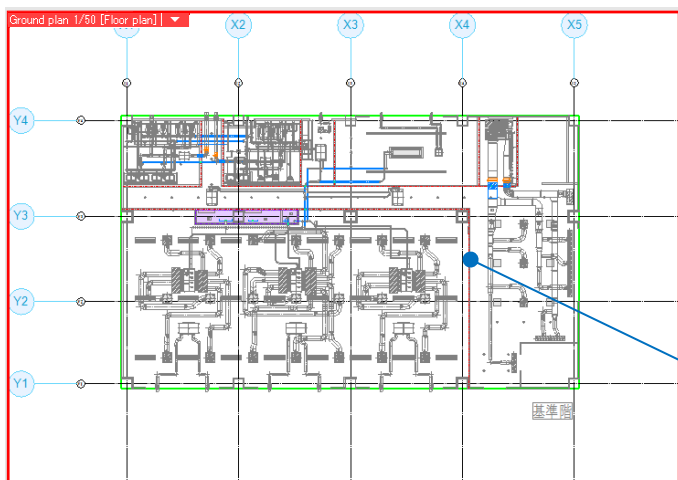
The element for which the control area is set will be colored.

Confirm fire compartment



Color coding	
■	Area division
■	Article 114 division
■	Vertical division
■	Fire spread area
■	Different purpose compartment
■	Other division
■	Penetration route

Color-code each type of divisions.



You can color fire compartments, penetration of fire protection compartments, routes on penetration parts, and dampers.

How to detect clashes

You can confirm the clash detection results by opening the drawing for which Rebro detected clashes.

Left-click [Detect clash] to open [Clash detection] panel.

Balloons of the appropriate color appear at the points of clash or lack of separation. Left-click the clash number on the panel to change the balloon color with the same number.

[Clash detection] panel

NO.	Element name	Element name	Contents
1	City gas Pipe 80A	Beam 350×700H	Lack of Separation
2	City gas Pipe 80A	Floor 150H	Clash
3	Smoke control D...	Smoke control D...	Clash
4	Smoke control D...	Smoke control D...	Clash
5	Smoke control D...	Smoke control D...	Clash
6	Smoke control D...	Smoke control D...	Clash
7	Smoke control D...	Smoke control D...	Clash
8	Cooling water (ret...	Fitting for pipe fab...	Clash
9	Cooling water (su...	Floor 150H	Clash
10	Expansion pipe (a...	Floor 150H	Clash
11	Cooling water (su...	Floor 150H	Clash
12	Cool and warm w...	Floor 150H	Clash
13	Cooling water (ret...	Floor 150H	Clash
14	Cooling water (ret...	Beam 350×700H	Lack of Separation
15	Cooling water (ret...	Floor 150H	Clash
16	Cool and warm w...	Beam 350×700H	Lack of Separation
17	Cool and warm w...	Floor 150H	Clash
18	Thick conduit pip...	Floor 150H	Clash
19	Cable rack 400×70	Floor 150H	Clash

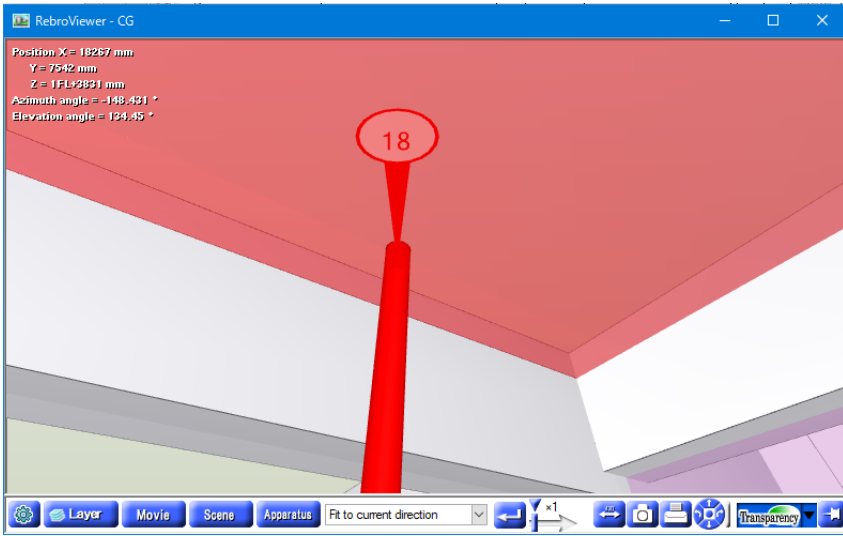
On the drawing, switch between balloon shapes, or Indication/Hide for the points of clash or lack of separation.

NO.	Element name	Element name	Contents	X	Y	Z	The quantity of clashes (upper)	The quantity of clashes (lower)
1	City gas Pipe 80A	Beam 350×700H	Lack of Separation	350	7825	1FL+4139		
2	City gas Pipe 80A	Floor 150H	Clash	350	7825	1FL+4925	1723	150
3	Smoke control D...	Smoke control D...	Clash	4990	9149	1FL+3800	284	284
4	Smoke control D...	Smoke control D...	Clash	4990	8812	1FL+3800	378	378
5	Smoke control D...	Smoke control D...	Clash	5159	8980	1FL+3800	263	263
6	Smoke control D...	Smoke control D...	Clash	5224	8756	1FL+3742	419	419
7	Smoke control D...	Smoke control D...	Clash	5225	9174	1FL+3761	412	412
8	Cooling water (ret...	Fitting for pipe fab...	Clash	6002	11300	1FL+2149	38	2
9	Cooling water (su...	Floor 150H	Clash	13800	11900	1FL+4925	1304	151
10	Expansion pipe (a...	Floor 150H	Clash	13800	11300	1FL+4925	1373	151
11	Cooling water (su...	Floor 150H	Clash	13800	11650	1FL+4925	1240	151
12	Cool and warm w...	Floor 150H	Clash	14100	11300	1FL+4925	1264	151
13	Cooling water (ret...	Floor 150H	Clash	13800	12150	1FL+4925	1304	151
14	Cooling water (ret...	Beam 350×700H	Lack of Separation	13800	12400	1FL+4348		
15	Cooling water (ret...	Floor 150H	Clash	13800	12400	1FL+4925	1304	151
16	Cool and warm w...	Beam 350×700H	Lack of Separation	14400	11300	1FL+4368		
17	Cool and warm w...	Floor 150H	Clash	14400	11300	1FL+4925	1264	151
18	Thick conduit pip...	Floor 150H	Clash	17790	6550	1FL+4925	1646	150
19	Cable rack 400×70	Floor 150H	Clash	17760	11260	1FL+4925	1281	151

Left-click the list to check the number of clashes at the clash points.

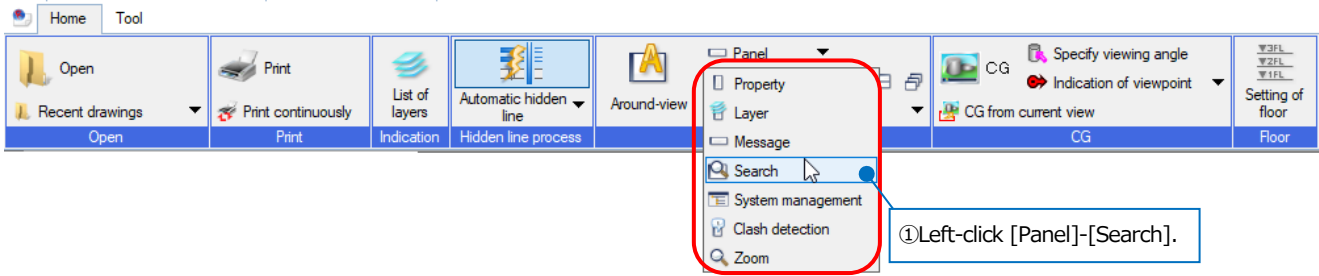
RebroViewer

When you double left-click the table or balloon, CG screen appears and brings the viewpoint close to the clash point.

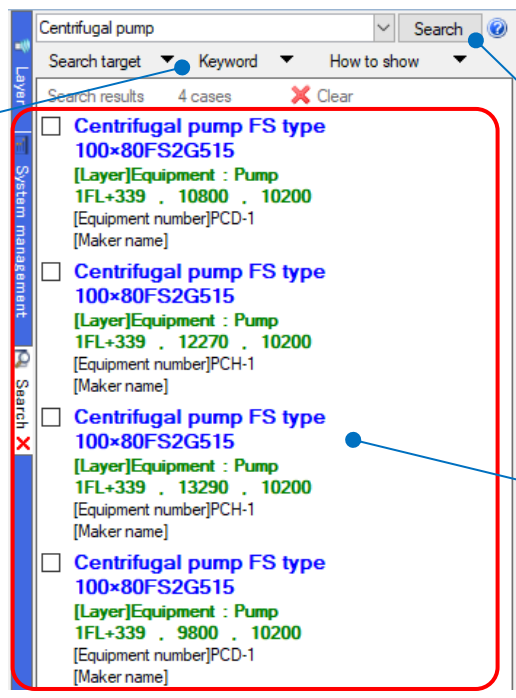
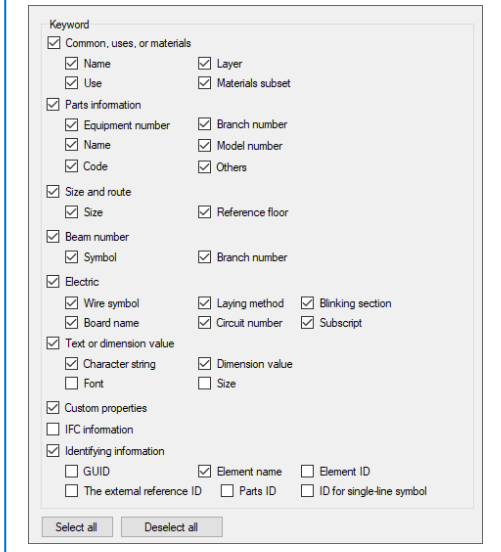


How to search for characters and so on

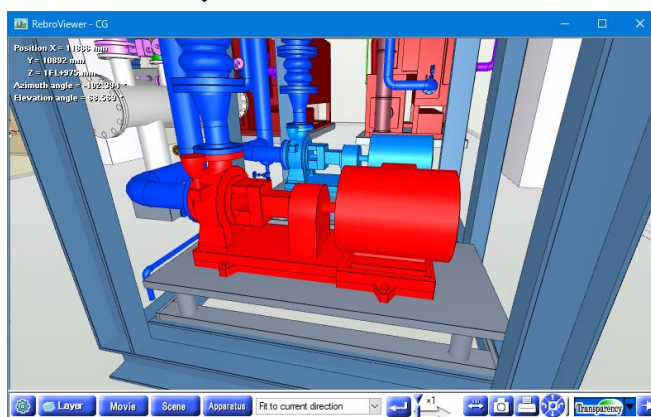
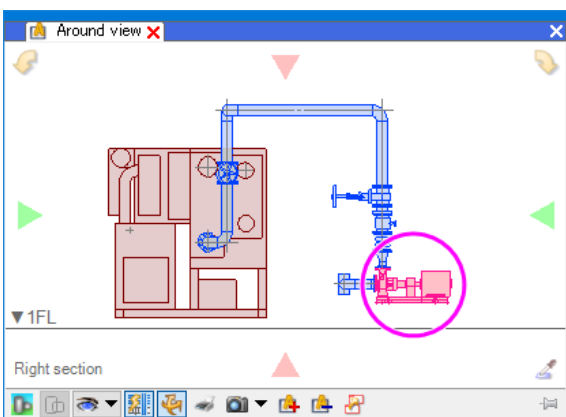
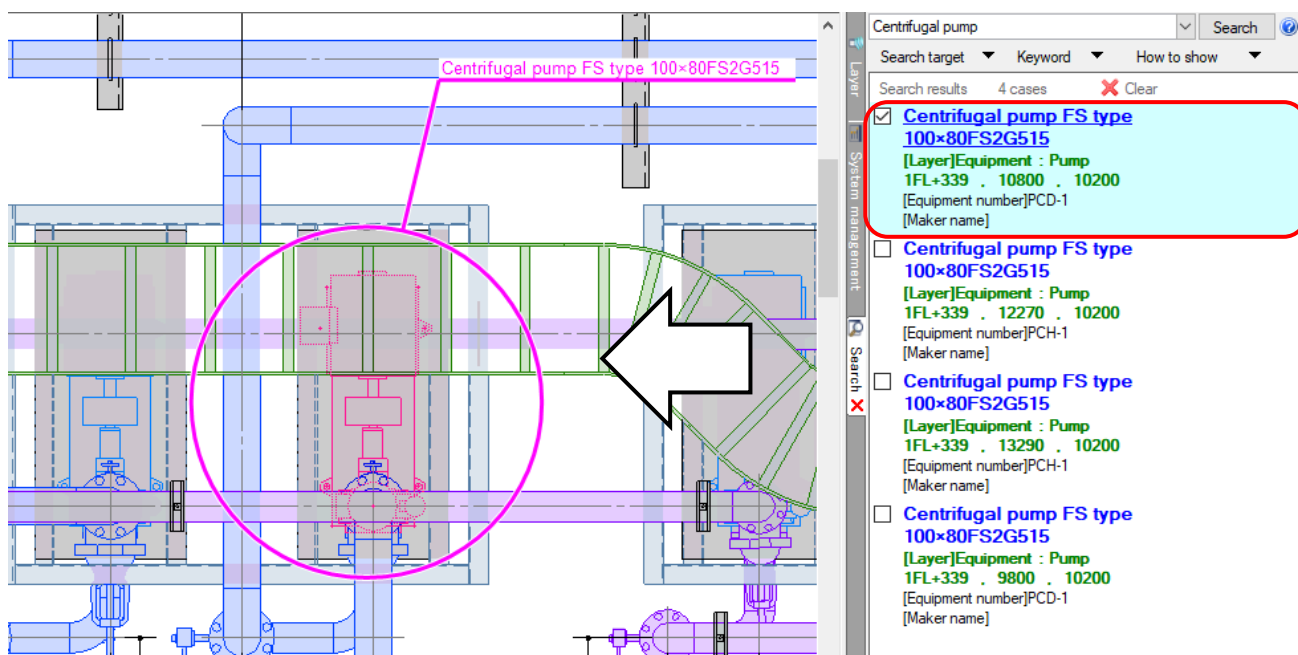
By entering keywords, you can search for characters, parts and so forth on the drawing.



Narrow down keywords for property descriptions.



If you select the part from the search results, you can confirm the part on a drawing, around-view, or CG.

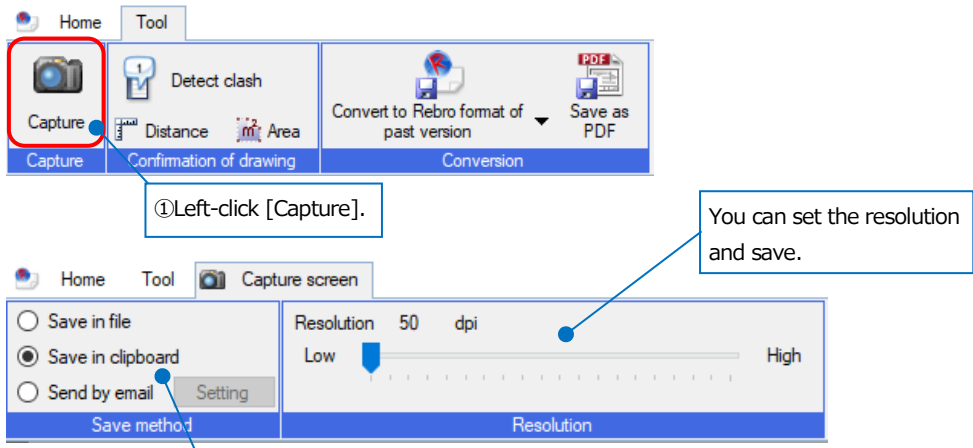


Memo

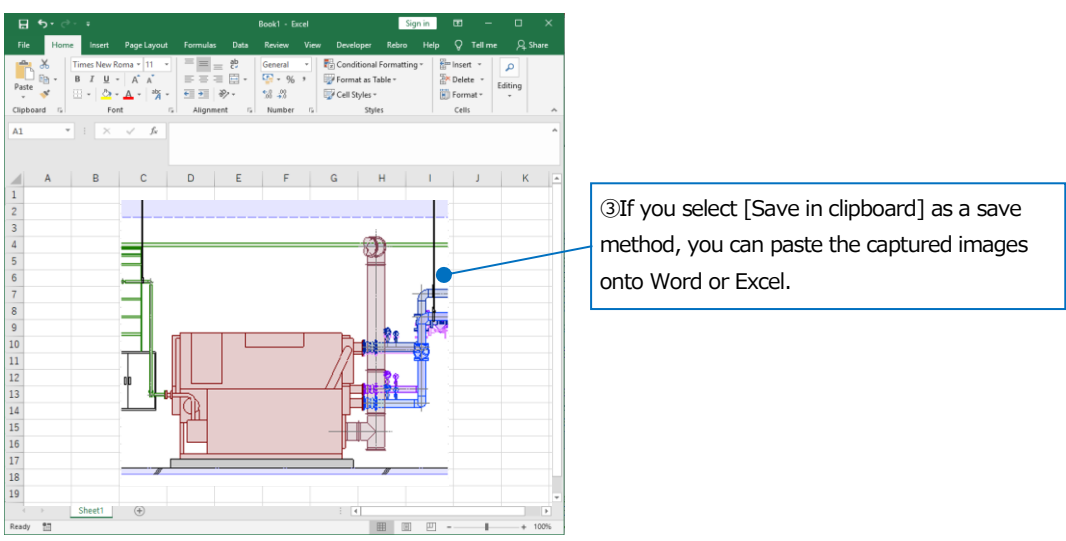
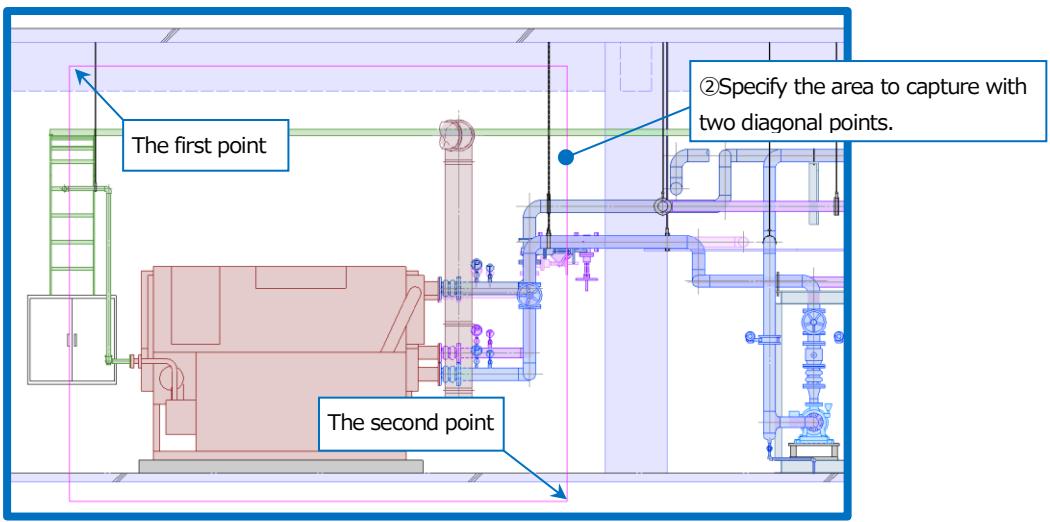
Left-click [How to show] to select whether to display or hide CG or around-view, when you select a search result list.

How to capture images

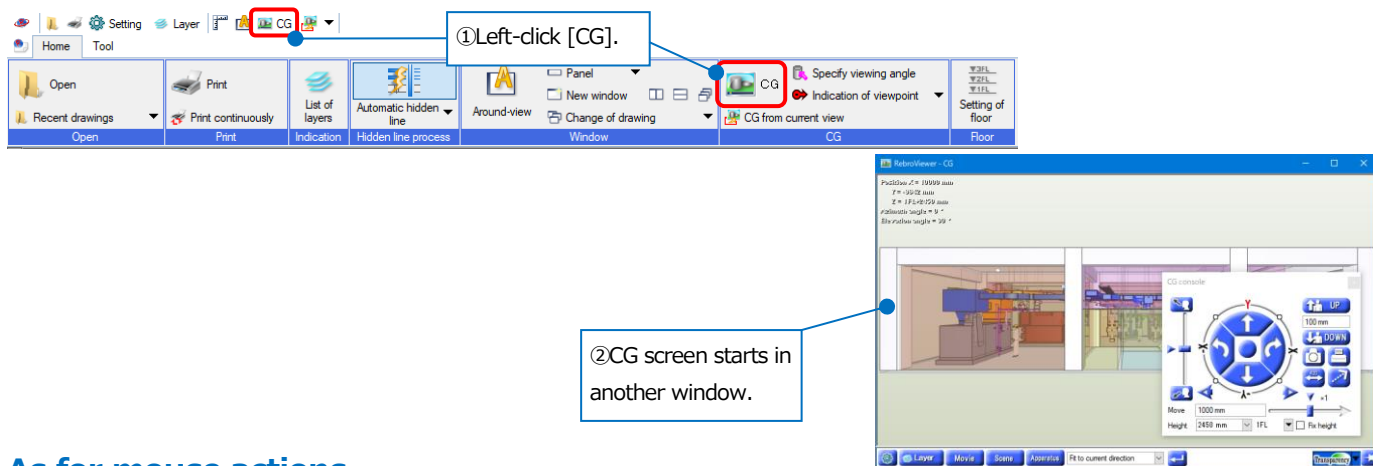
You can save a specified area on Rebro screen as an image.



[Save in file]: You can save the images into BMP, JPEG, GIF, TIFF, and PNG image formats. Also, you can save into PDF file format.
[Save in clipboard]: You can paste the images onto Word or Excel.
[Send by email]: You can send the saved images by e-mail. Left-click [Setting] to enter an email address, subject, and main text.



4.CG





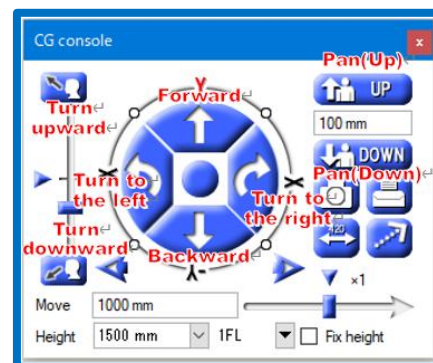
As for mouse actions

Wheel	Go forward or backward by rotating. Move the screen by dragging.
Left-drag	Turn the screen up, down, left, and right around the current position.
Right-drag	Rotate the screen around the position (on the element) where the mouse points.
Double left-click (sweeping)	Bring the viewpoint closer to the specified element.
Double right-click	Make the screen level.

Note: If you rotate the wheel while pressing Ctrl, the screen moves at twice the distance.

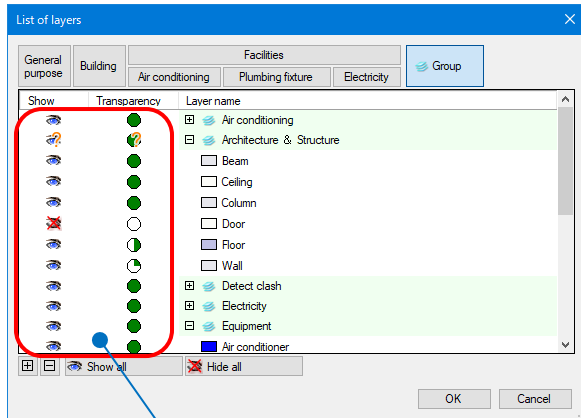
How to operate screens on a CG console panel

Forward or backward	Move the viewpoint forward or backward.
Turn to the left or turn to the right	Turn the viewpoint to the left or right.
Turn upward or turn downward	Turn the viewpoint upward or downward.
Slider handle 	Adjust the speed and quantity of movement when moving on the screen.
Move	Specify a moving distance. Set the distance at a pitch of one-click for moving forward or backward.
Pan (Up) or (Down)	Move the viewpoint up or down at the input value.
Pan (Left) or (Right) 	Move the viewpoint to the left or right.
Height	Select the floor name and enter the viewpoint height directly to move the screen.
Fix height	Checkmark in the box, to fix the current height and move the screen forward, backward, left, or right.



As for layers

On CG screens, you can set up Indication/Non-indication layers and layers transparency.



Left-click the icons to switch them.

Left-click [Show] icon to switch the settings.

- Indication
- Non-indication

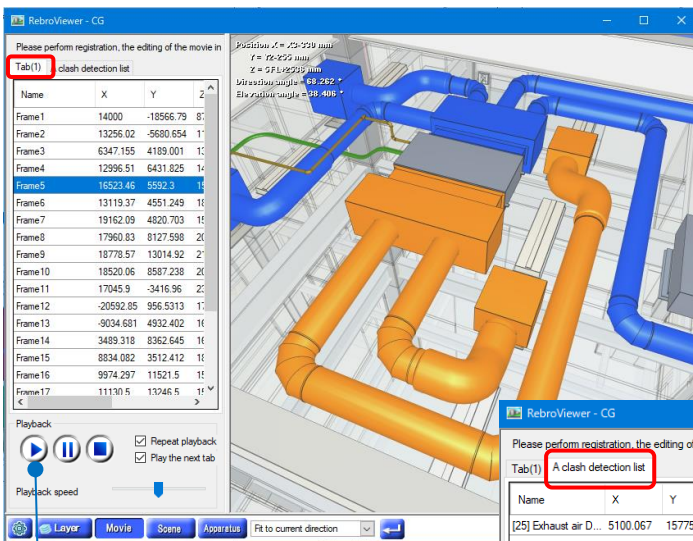
[Transparency] can be changed by left-clicking the icon. As the white ratio increases, the transparency increases.



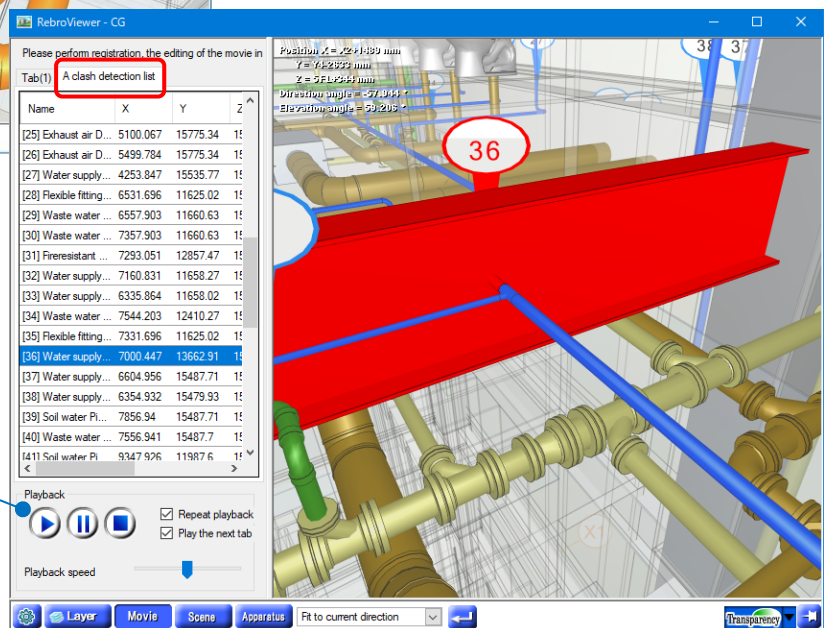
When Non-indication is left-clicked, the transparency icon will be .

As for a movie

You can play movies created with Rebro, or [CG movie output] output with [Clash detection].



Play the registered frame.

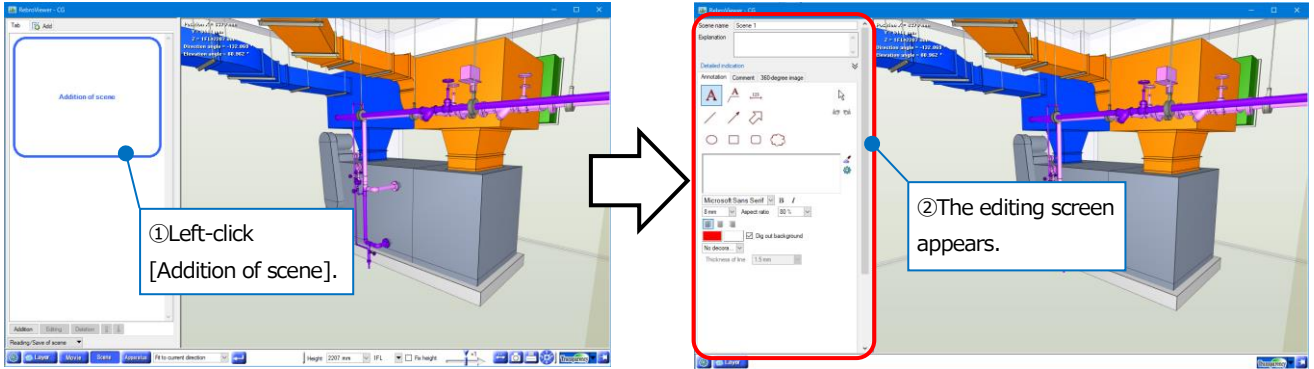


Play CG Scenes of the registered clash points.

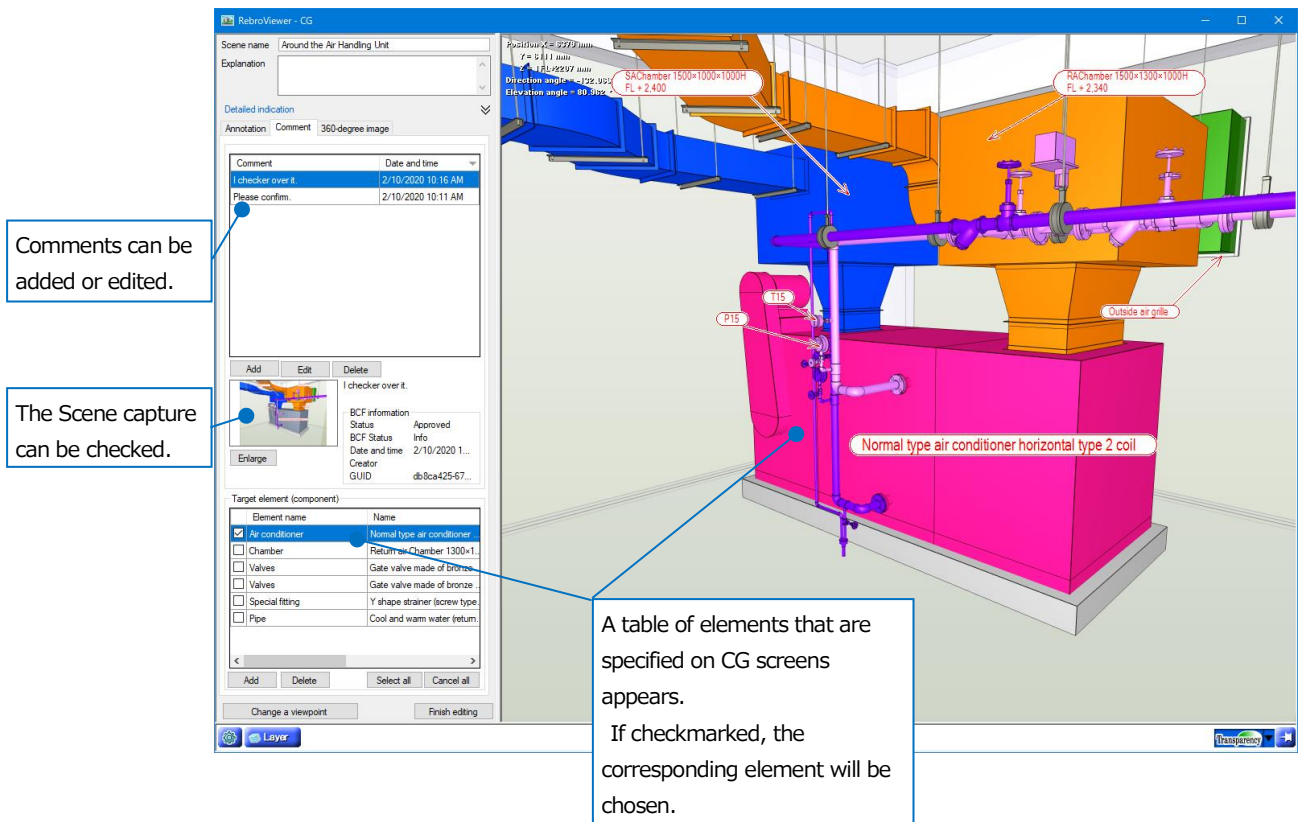
As for Scenes

You can register the currently shown CG screen as Scene, and fill out with characters, dimension lines, or figures on it by using [Annotation] tab.

The registered Scene can be printed, saved, and also passed to Rebro.

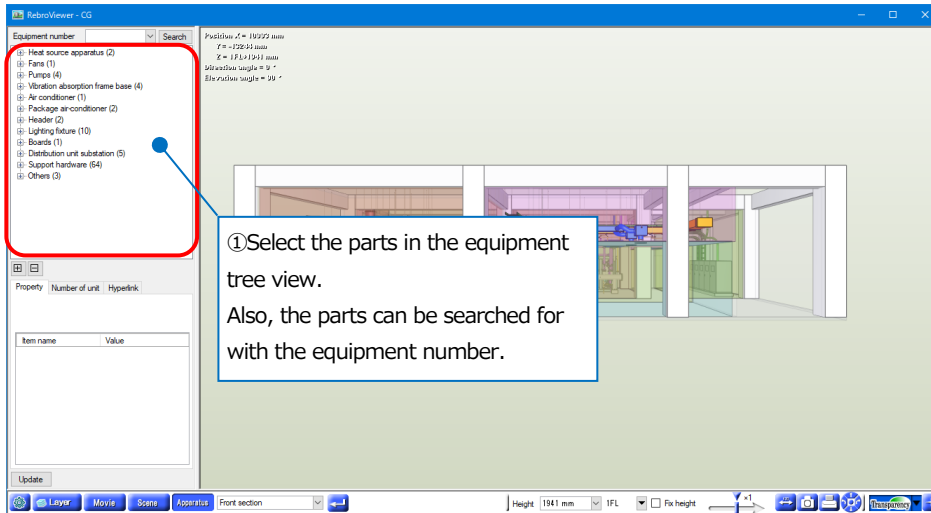


Comments on Scene can be exchanged in [Comment] tab. You can also pass the data to Rebro, if you save or read in BCF, you can pass it to other CAD.

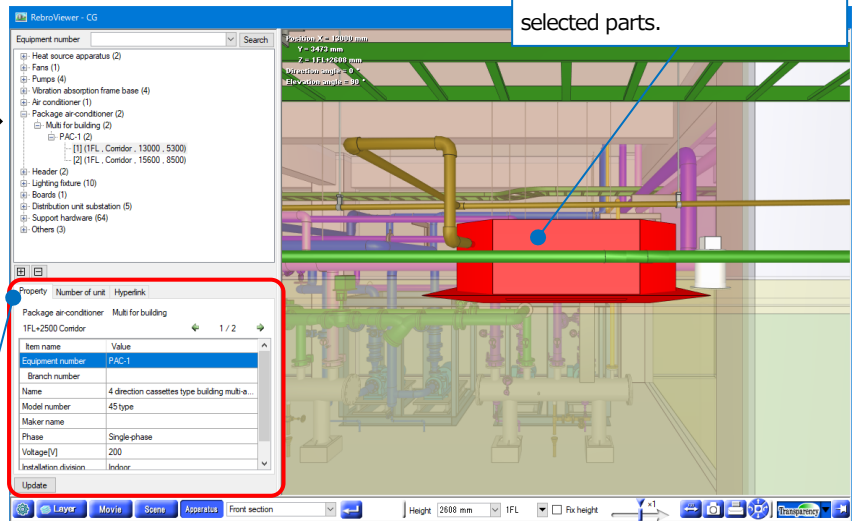
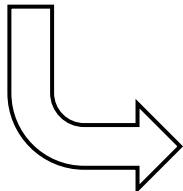


As for equipment

You can check the position of placed parts on CGs or drawings.



2 The screen moves to the position where you can see the selected parts.

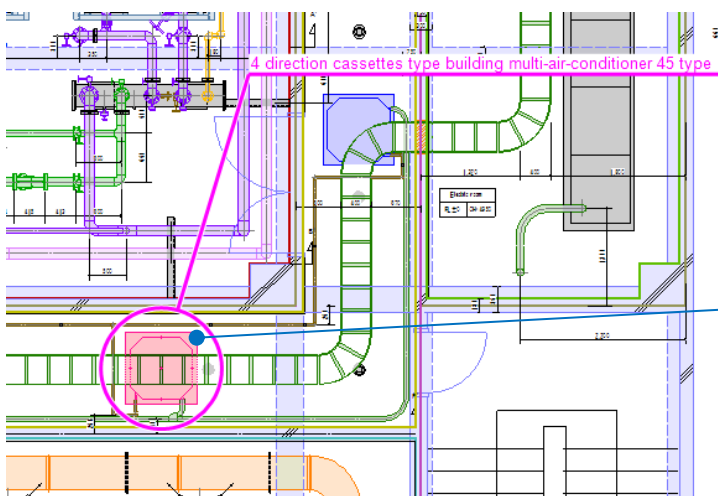


Property **Number of unit** **Hyperlink**

[Property]
The property information on the selected parts can be checked.

[Number of unit]
A list for number of units for selected parts appears.

[Hyperlink]
You can access hyperlinks that are set on the equipment.



[CG Parts]

Search target Keyword How to show

Search results 1 cases Clear

**4 direction cassettes type building multi-...
45 type**

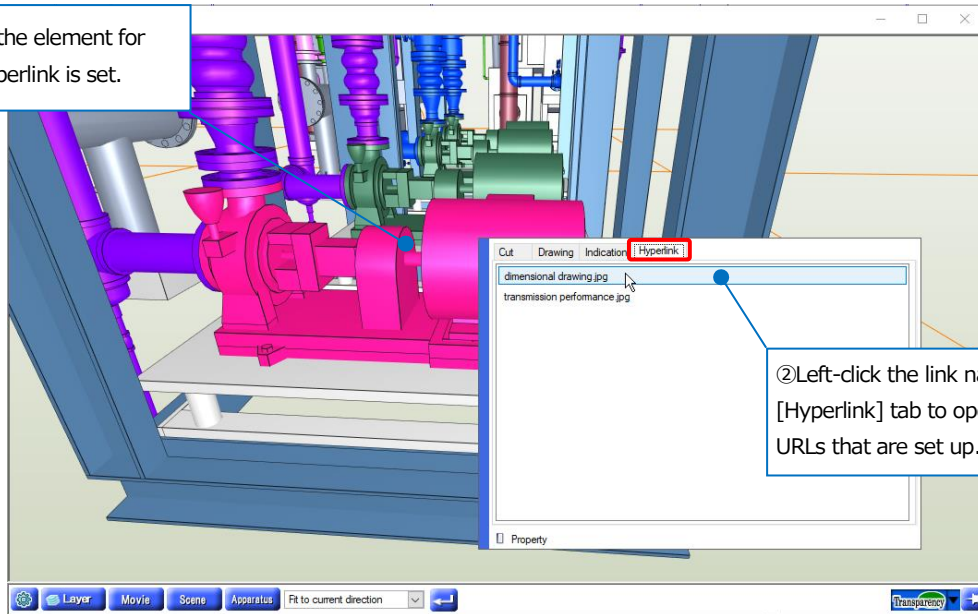
[Layer]Equipment : Air conditioner
1FL+2500 . 13000 . 5271
[Equipment number]PAC-1
[Maker name]

3 Parts in list form appear on the search panel of the drawing. Circle marks and arrows are shown on the drawing so that you can check the element position.

As for hyperlinks

On CG, you can refer to the linked files or URLs for the equipment that you set up hyperlinks.

① Right-click the element for which the hyperlink is set.

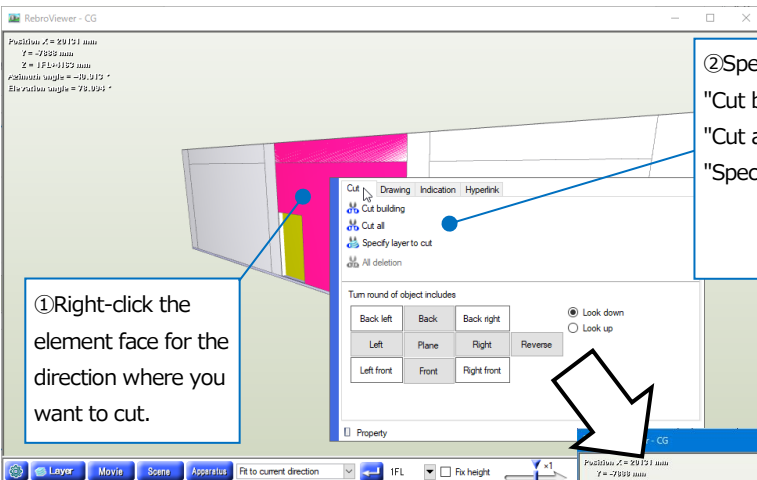


② Left-click the link name in [Hyperlink] tab to open files or URLs that are set up.

How to cut a cross section

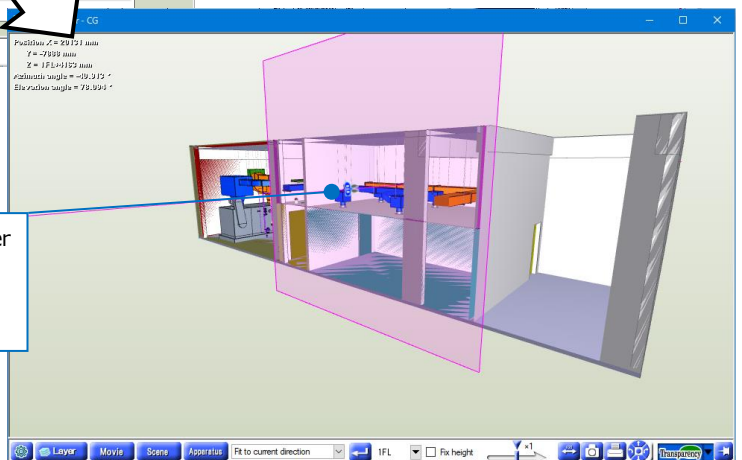
You can cut a cross section of element on CG.

① Right-click the element face for the direction where you want to cut.



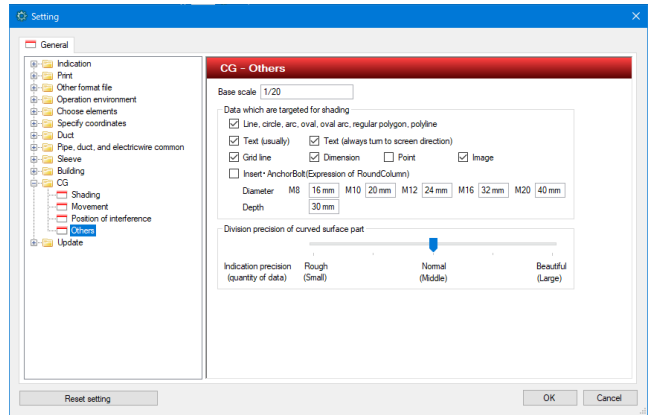
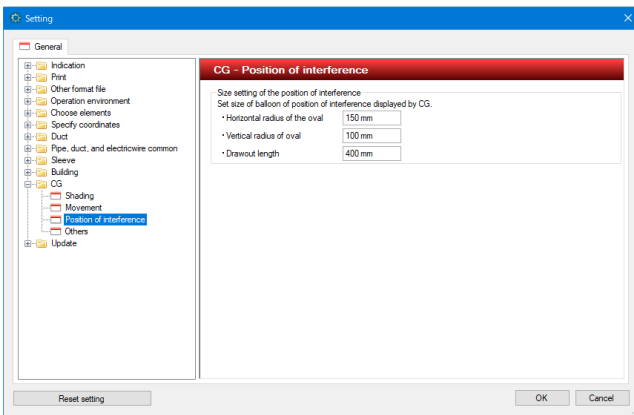
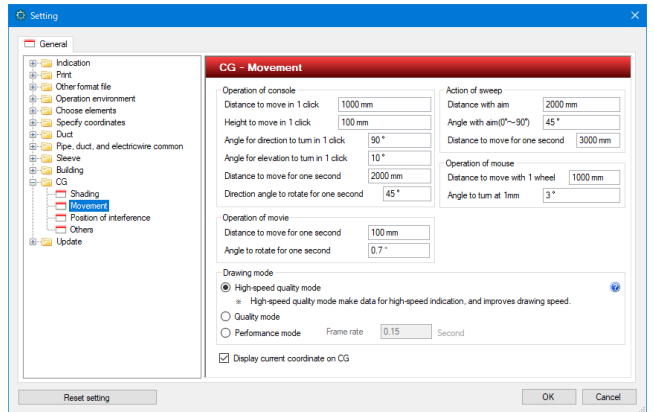
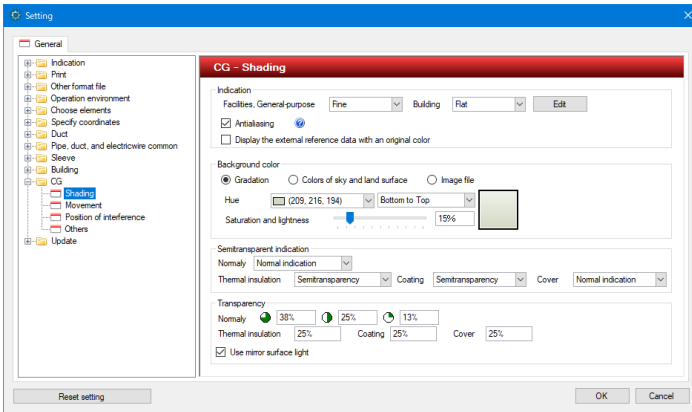
② Specify elements to cut.
 "Cut building": Cut elements in an architectural layer.
 "Cut all" : Cut elements in all layers.
 "Specify layer to cut" : Specify a layer in which the element to cut exists.

③ Left-drag the scissors pointer to cut CG.



How to set up the displays and so on

In [Setting] , you can set up the indications and movements on CG screens.

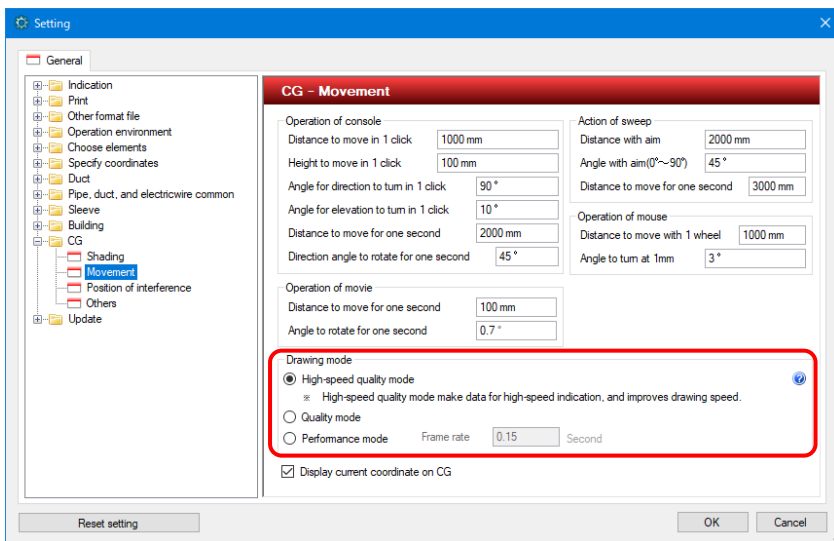


As for “Drawing mode”

“High-speed quality mode”: Move a screen even in the middle of drawing while keeping the image quality of Quality mode.

“Quality mode”: Move a screen after showing all elements.

“Performance mode”: Move a screen while drawing the screen.



5. Print

How to print

You can print Rebro drawings.

1 Left-click [Print].

2 Select a printer.

3 Select the print color and number of copies in [Output setting].
If you uncheck "Change line types or thickness according to the printing scale", Rebro prints the line types and thickness as specified when drawing, without reference to the printing scale.

4 Select the paper size and printing orientation in [Paper setting].

5 Select the enlargement ratio for the drawing in [Print scale].

6 Left-click [Print].

Select [Change of print area] to return to the drawing and specify the printing size and position with a mouse.

When printing, you can change the line thickness per scale in [Pen setting].

Thick...	Remarks	... 1/10	1/20	1/30	1/50	1/100	1/200	1/300	1/400	1/500	1/600	1/601 ...
0.01mm	The thinnest lin...	0.01	0.01	0.01	0.01	0.01	0.01	0.01	0.01	0.01	0.01	0.01
0.05mm		0.05	0.05	0.05	0.05	0.05	0.05	0.05	0.05	0.05	0.05	0.05
0.07mm		0.07	0.07	0.07	0.07	0.07	0.07	0.07	0.07	0.07	0.07	0.07
0.09mm		0.09	0.09	0.09	0.09	0.09	0.09	0.09	0.09	0.09	0.09	0.09
0.10mm		0.1	0.1	0.1	0.1	0.1	0.1	0.1	0.1	0.1	0.1	0.1
0.13mm		0.13	0.13	0.13	0.13	0.13	0.13	0.13	0.13	0.13	0.13	0.13
0.15mm		0.15	0.15	0.15	0.15	0.15	0.15	0.15	0.15	0.15	0.15	0.15
0.18mm		0.18	0.18	0.18	0.18	0.18	0.18	0.18	0.18	0.18	0.18	0.18
0.20mm	Pipe arrangeme...	0.2	0.2	0.2	0.2	0.2	0.2	0.2	0.2	0.2	0.2	0.2
0.25mm		0.25	0.25	0.25	0.25	0.25	0.25	0.25	0.25	0.25	0.25	0.25

Printing line thicknesses per scale

Line thicknesses on the drawing

How to print continuously

You can print layouts of multiple Rebro drawings collectively.

①Left-click [Print continuously].

②Select a printer.

③Select multiple drawing files in [Addition of file]. You can also select drawing files collectively by specifying a folder with [▼] on the right of the tab.

④Checkmark the layout to print.

⑤Left-click [Print].

File name	Layout name	Drawing size	Mark	State
<input checked="" type="checkbox"/> CG-eng.reb	Layout group1-Whole ground plan	A1(841mm×594mm)	Mark ⊕	
<input checked="" type="checkbox"/> CG-eng.reb	Layout group1-Section plan of pipe	A1(841mm×594mm)	Mark ⊕	
<input checked="" type="checkbox"/> CG-eng.reb	Layout group1-Equipment layout drawing	A1(841mm×594mm)	Mark ⊕	
<input checked="" type="checkbox"/> Office building-en.reb	Sanitary_Air conditioning,Electricity-5F Sa...	A1(841mm×594mm)	Mark ⊕	
<input checked="" type="checkbox"/> Office building-en.reb	Sanitary_Air conditioning,Electricity-4F Duct	A1(841mm×594mm)	Mark ⊕	
<input checked="" type="checkbox"/> Office building-en.reb	Sanitary_Air conditioning,Electricity-RF Ele...	A1(841mm×594mm)	Mark ⊕	
<input checked="" type="checkbox"/> Office building-en.reb	Sanitary_Air conditioning,Electricity-Groun...	A1(841mm×594mm)	Mark ⊕	
<input checked="" type="checkbox"/> Office building-en.reb	Sanitary_Air conditioning,Electricity-4 direc...	A1(841mm×594mm)	Mark ⊕	

Software License Agreement for RebroViewer

NYK Systems Inc. (hereinafter referred to as “Company”) shall grant to Customers rights to use software product of the Company (hereinafter referred to as “Software”) only when Customers agree to any and all terms and conditions contained in this “Software License Agreement” (hereinafter referred to as “Agreement”).

The Customer shall be deemed to have agreed to enter into the Agreement by installing the Software upon selection of “I agree to the provisions in the License Agreement” to be displayed in the dialogue representing the Agreement. In case where the Customer acquires the Software for his/her own personal use, the Agreement shall be established between the Customer him/herself and the Company, while in case where the Customer acquires the Software on behalf of any corporation or other legal entity, the Agreement shall be established between such corporation or legal entity and the Company.

Article 1 Grant of Right to Use

1. The customer may install and use the Software in multiple computers.
2. The customer may make and deliver the duplicate copies of the Software. In the case, the customer shall duplicate the Software including the copyright notice of the Company displayed in the Software.

Article 2 Attribution of Rights

Unless expressly provided for in the Agreement, rights in and to the Software (i.e. title, ownership, copyrights and any other intellectual property rights, etc.) shall be owned by the Company. The Software shall be protected by the Copyright Act.

Article 3 Prohibited Matters

The Customer shall acknowledge that the Software has confidential or proprietary information including intangible property rights protected by the Copyright Act and may not commit an act mentioned below:

1. The customer may not use or duplicate the Software beyond the conditions as set forth in the Agreement.
2. The Customer may not alter, translate, reverse-engineer, decompile or disassemble the Software, either in whole or in part.
3. The Customer may not sell or lease the Software to any third party.
4. The Customer may not eliminate, delete or change the display for right of ownership and intangible property rights that are recorded or displayed in the Software.

Article 4 No Warranty

The Company shall offer the Software as it is. The Company shall in no case assume any responsibility with respect to any express or implied warranty including legal defect liability, the Customer’s loss of business interest caused by the Software, any other damage caused by special circumstances, any other damage to data and the like, and liability for compensation, etc., based on claims for damages by any third party against the Customer regarding intangible property rights.

Article 5 Termination of Right to Use

1. The Customer may terminate the right to use the Software at any time.
2. In case where the Customer falls under the conditions mentioned below, right to use the Software shall terminate automatically:
 - (1) In case of breach of the Agreement by the Customer.
 - (2) In case where the customer is granted right to use a different version of the Software.

Article 6 Measures against Termination of Right to Use

In case where the Customer’s right to use the Software terminates, the Customer shall obliterate or destroy the Software and any duplicates of the Software.

Article 7 No User Support

The Company will not respond to any inquiries or questions with respect to the Software.

RebroViewer Operation Guide <16 April, 2021, Version 3>

'Rebro' is a registered trademark of NYK Systems Inc., NYK Systems Inc. own the copyright of 'Rebro' and 'RebroViewer', and other rights relating to the 'Rebro' and 'RebroViewer', Do Not copy, alter all or part of this product regardless of its form.

Windows 10, Windows 8.1, Windows 7 are registered trademark of Microsoft Corporation in USA and other countries. InfiPoints® is registered trademark of ELSIUM Inc. MITSUMORI KUN® is registered trademark of Compcare Inc. Revit® is registered trademark of Autodesk Inc. Luminous Planner™ is rademark of Panasonic Corporation. DK-BIM is registered trademark of DAIKIN INDUSTRIES,LTD. SPIDERPLUS® is registered trademark of SpiderPlus & Co. Ducter is registered trademark of NEGUROSU DENKO CO.,LTD. Other products are trademark or registered trademark of each company. The copyrights of "BE-Bridge", and 'Stem' are owned by BMMC(Building Maintenance & Management Center) in Japan. This product based on Teigha® from the Open Design Alliance, IFC Engine™ from RDF Ltd., VB-Report7 from Advanced Software Corp., PDF-XChange PRO SDK from Tracker SoftWare Products, DotNetZip Library from CodePlex, SpreadSheetGear® from XLSOFT under each requirement of redistribution. This product use a patent of SHIMIZU CORPORATION (Japanese Patent No.6384709) by permission. This product include parts from TOTO LTD. and LIXIL Corporation by permission. These parts are added informations to proffered shapes. And downsized as not change appearance.